

Transcontinental Outdoor Program 1st In Color TV

**"Tournament Of Roses" Transmitted
From Pasadena Came To The East
As 4th Show In Medium's Infancy**

Science achieved another milestone New Year's Day when the resplendence of the "Tournament of Roses" held in Pasadena, California, was transmitted across the continent on color television sets. In hurdling the country from west to east, the show marked the first outdoor program presentation of color TV and the fourth experimental broadcast in the medium's infancy.

(Continued On Page Two)

New Executive Secretary At Family Service Agency

Mrs. Helen McCarty Of Baltimore Holds Two Degrees Aside From Field Experience In The New York Psychiatric Clinic

Family Service, the social work agency of Belleville, welcomed a new executive secretary, Mrs. Helen McCarty of Baltimore, on January 4.

Mrs. McCarty was elected to the position of executive secretary by the Board of Trustees, presided over by President Nicholas Colaninno, on the recommendation of the agency's personnel committee, on November 17. The personnel committee consists of Allan G. Love, chairman, Mrs. Warren, Peterson, Rosenberg, Garraway, Dr. Frank M. Durkee, and Esther H. Adams.

The new executive secretary has a B.S. degree from the University of Delaware and a M.S. degree from the New York School of Social Work, where the majority in psychiatry and did field work in the New York Psychiatric Clinic. Family Service of America requires an executive secretary to have a master's degree.

Extensive experience in case work, supervision of personnel, and administration in social agencies prepared Mrs. McCarty for the position. Executive secretary of Belleville Family Service, coming from the Children's Home of Baltimore, where she was in charge of the Social Service Department and worked with children and parents, Mrs. McCarty knows the real meaning of family service.

Other experience in the Baltimore area for Mrs. McCarty included nine years with the Henry Watson Children's Aid Society (now Family and Children's Society), during which she did cooperative work with Well Children's Clinic at Johns Hopkins Hospital, University of Maryland, and the Hygiene Clinic, and supervision of social work students from Catholic University, and the National Chapter of the American Red Cross with supervision of trained and untrained caseworkers, and the Harriet Lane Heart Clinic of Johns Hopkins Hospital, with casework services for rheumatic fever patients and their parents.

Other experience included the position of casework director with Family Service, Dayton, Ohio; and caseworker with the Social Service League of Montgomery County, Rockville, Maryland.

Mrs. McCarty replaces Evelyn Abelson who resigned August 14, 1953.

OUR CLASSIFIED SECTION
BRINGS QUICK RESULTS
TO ADVERTISERS



LOW MAN
on the
PAYROLL

It's a well known fact that the New Jersey teacher gets low pay. Is that why 80,000 of our children have teachers who are not fully qualified?

For information on what you can do about it, write to:
NEW JERSEY EDUCATION ASSOCIATION
200 W. State St., Trenton 4, N. J.

Committee For Young Men Establishes Groundwork

Adoption Of A Constitution And Election Of Permanent Officers Completed At Meeting; Chairman Of State Organization Deliver Talk

Solidification measures for the Committee for Young Men in Government in Belleville were carried out in a meeting of the group this week. A constitution prepared by John Gibbons, chairman of the Constitution Committee was adopted by the members with the reservation that certain revisions be made.

An election of permanent officers was held with Peter A. Torre, Jr., being installed as the Chairman, Charles M. Macintosh, Vice-chairman; Edgar Kellett, Corresponding and Recording Secretary; Thomas A. Murray, Financial Secretary and Roger H. Inglis, Treasurer. Term of office will be until December, 1954.

Present at the meeting were Paul N. Edmont, Chairman of the state Committee for Young Men in Government and Arthur P. Morris, Vice-chairman of the state organization. They delivered a talk on the aims and purposes of the young organization on a national, state and local level, assuring the members that each level is operating on a non-partisan basis.

Preparations were initiated for the public forum to be held January 20 at the Belleville High School. At this time the question of a Charter Study will have a public airing. The meeting will open at 8:30 p.m.

A report from the chairman of the petition committee revealed good progress in endorsements requesting a charter study on the May ballot. To date 2,800 signatures have been obtained, 3,600 are required.

Even though the Board of Commissioners has accepted an ordinance for a charter study upon its first reading, the Committee for Young Men is remaining cautious by continuing the quest for signatures. In the event the ordinance does not get past the third reading.

County Municipalities League Formed

Essex League, 12th Affiliate Of State League, Will Operate During '54 Legislative Session; Under Leadership Of Mayor Tully

Tax relief, greater state aid to municipalities and protection against unnecessary state and county encroachments are some of the goals of the newly-formed Essex County League of Municipalities which is now being formed under the leadership of Mayor James J. Tully of Belleville.

The Essex League will be the twelfth affiliate of the New Jersey State League of Municipalities, and it expects to start functioning during the 1954 legislative session in Trenton.

Trink, temporary president of the Essex League and an executive board member of the state league, presided at Monday night's meeting of the formation and incorporation committee held at the Hotel Suburban, East Orange.

Representing Tully in the organization of the Essex League were Mayor McConnell of East Orange, Mayor Cain of Newark, Commissioners McKenna of Irvington, Giordano of Orange and Roos of West Orange; Councilmen Sherman of Woodfield and Williams of Verona and Township Committeeman Mitchele of Livingston, all of whom attended and were named temporary chairmen of their respective committees on organizational work.

Tully was authorized to appoint the formation committee at a meeting of 22 officials from 16 Essex municipalities during the annual convention of the state league last November. All Essex municipalities are being invited to join the new organization.

The temporary chairman are to report at another meeting January 21 at the Hotel Suburban. At that, Tully plans to call a general membership session to form the permanent body.

Save by the
2nd Monday of
any month...
earn from the 1st
of that month!

ANOTHER REASON WHY YOUR ACCOUNT
GROWS FASTER AT DE WITT...
START NOW WITH \$1 OR MORE!

**De Witt SAVINGS
AND LOAN ASSOCIATION**

280 Washington Avenue, Belleville
Plymouth 9-8264

Daily, 9 to 4; ALSO MONDAY EVES, 4:30 to 8

SAVINGS INSURED TO \$10,000

2 1/2% (lowest rate)

NEW JERSEY EDUCATION ASSOCIATION
200 W. State St., Trenton 4, N. J.



Mrs. McCarty

New Officers After Reorganization



F. G. Merkel

R. M. Jackson

Associated Companies Completed Merger Jan. 1

Wallace & Tiernan Co., Inc. Merged With Novadel-Agenc Corp.; F. G. Merkel, R. M. Jackson, G. D. Peet Elected Company Officers

Martin F. Tiernan, President and Chairman of the Board, announced last week that on January 1, 1954, the merger of the associated companies, Wallace and Tiernan Co., Inc. and Novadel-Agenc Corporation, into a single organization to be known as Wallace & Tiernan Incorporated will have been completed. Stock of the new company will be listed on the American Stock Exchange. Subsidiaries include W. C. Hardesty Co., Inc., Richmond Manufacturing Company, Electro-Rust-Proofing Corporation (N. J.) and Wallace and Tiernan Ltd., Mr. Tiernan also announced that while he will remain active as

Chairman of the Board, F. G. Merkel has been elected President, R. M. Jackson, Executive Vice President and Mr. D. Peet, Vice President in charge of Engineering.

Mr. Merkel, a resident of Montclair, and an engineer by training has been with the Wallace & Tiernan group in various executive and sales capacities for nearly thirty-five years. His most recent assignment has been as president of W. C. Hardesty Co., Inc. He is well known throughout all the fields of Wallace & Tiernan and Novadel activities, and brings to his new job a broad experience in management, sales, research and legal matters.

Mr. Jackson has been associated with the organization for over twenty years. He has been Treasurer for the past several years and in that capacity has been active in overall management. His training has been primarily in the financial field but he has also acquired substantial experience in all phases of business management. Mr. Jackson is a resident of Belleville.

Mr. Peet has been with Wallace & Tiernan almost since its inception and is a valued member of the management team. He has been Chief Engineer as well as an officer of subsidiary companies. In those capacities he has made many valuable contributions to company operations both in engineering and management. He is a resident of Montclair.

It is anticipated that this merger of the Wallace Tiernan equipment, engineering and pharmaceutical lines with the Novadel chemical lines will give the new company a broader base, enhance

Fund At Resistoflex Gets 10% Of Profits

Resistoflex Corp. of Belleville this year contributed \$25,308 to its employees' savings and profit-sharing fund. The sum represents 10 per cent of the firm's profits during the fiscal year ended June 30.

In addition to its systematic savings feature, the employees' fund also is drawn on during unemployment and in retirement. There are 128 employees participating.

WADSWORTH FUNERAL HOME

F. Douglas Wadsworth

524 Union Ave.,
Belleville, N. J.

PLymouth 9-2879

This newest and most complete Funeral Home brings many years reputation for Integrity and finer Funeral Service.

Years Have Lent
Distinction To Our
Name

Wadsworth Service is not limited to Belleville and suburbs. We have representatives in all large cities and can provide instant service

Transcontinental

(Continued From Page One)

vision states that "A complete picture cannot be sent at one time. It must be broken up into exceedingly small units. Each unit is then transmitted as an electrical signal which presents the relative brightness of that unit. By arranging for the orderly transmission of these signal units, one following the other, it is then possible at the receiving end to reassemble the picture with each unit in its exact position and in its original shading, ranging from black to white. By transmitting a number of consecutive scenes rapidly, the viewer is given a sense of motion in much the same way that the motion picture film gives the impression of life-like movement.

It is explained that in the assemblage of a complete color signal, the image is broken up into three primary colors by the color television camera; red, blue and green. An electronic description can be given of each color in "visible spectrum" by selecting the proper values of hue, saturation and brightness.

"By adding a certain amount of each of the three primary color signals to the picture, a color can be produced in the eye. Green and red together give an impression of yellow; red and blue results in purple. An absence of all three primaries produces an impression of black."

A black-and-white picture tube is the instrument used for reproducing scenes on the receiver. Electronic guns for each primary color within the tube, send out streams of electrons which fall on phosphor dots, glowing red, blue or green, on the viewing screen. Each color from the guns seeks out only its color on the screen.

A black-and-white receiver ignores the hue and saturation characteristics of a color signal and merely the picture brightness is needed. Many questions pertaining to color TV are answered by the

OUR CLASSIFIED SECTION
BRINGS QUICK RESULTS
TO ADVERTISERS

ROLLER SKATING
Riviera Park
TUESDAY 7:30 P. M.
FRIDAY
SATURDAY to
SUNDAY 11 P. M.
SATURDAY and
SUNDAY MATINEE
2 to 5 P. M.
701 WASHINGTON AVE.
BELLEVILLE, N. J. Plymouth 9-4945
Dance Lessons and Races Saturday PM

National Business Bureau. The Bureau has sought facts from a group having the most information and the conclusion is that there is no basis for public expectations that color receivers will be available in quantity in the near future or that the difference in price between color and black and white receivers will soon be a negligible factor.

Wash. Sets Available - The bureau forecasts that it will be some time before most of the television stations strung across the nation will be able to pick-up and reproduce color broadcasts. During 1954, a few major networks on limited network will be broadcast to the larger cities of the nation. It is estimated that the added cost of a color telecast would drive the advertiser somewhat from employing this method.

Manufacturers estimate that "more 2% of the total TV production in 1954 will be in color due to a definitely limited supply of color tubes."

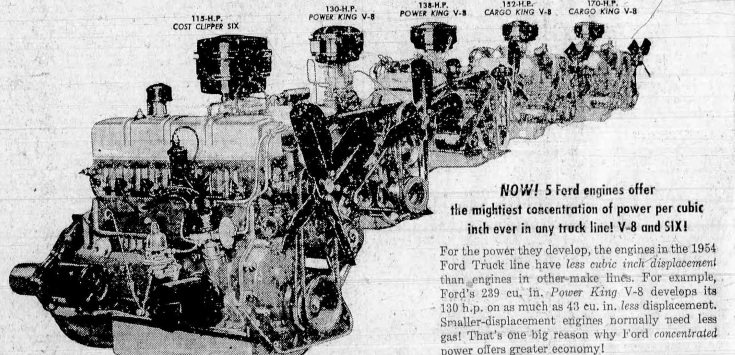
Difference In Cost
Due to the incorporation in one chassis and in one picture tube, the ability to receive either color or black and white programs at the turn of a switch is a complex engineering and costly in production for comparable

PAPER MILL
PLANTHOUSE
MILL 1000 ft. x 1000 ft. x 1000 ft.
Box Office Open Daily 10 a.m. to 10 p.m.
From (See Page 5) 500
NOW PLAYING
Broadway's Brilliant Musical
PAINT YOUR WAGON
with
Ethel Sledge - Christine McMillan
Adrian Foster - Marjorie Main
Daniel Negrin - Marie Marshall
Tickets Keeney's Banquet All Agencies.
Mail Orders

STARTS TODAY
CAPITOL PL-9-1097
ENJOY THESE SHOWS ON OUR NEW WIDE GYANT SCREEN
Times, PM & Sat. Eve.
Jan. 7-5
"Appointment in Honduras"
With Glenn Ford & Amy Brandon
In Color On Same Program
"Marry Me Again"
With Marie Wilson
Jan. 9th
16 All Color Cartoons including
Tom & Jerry, Pogo, and others
Plus
"Appointment in Honduras"
Sun., Mon. & Tues.
Jan. 10-11-12
2 Technicolor Hits
"Let's Do It Again"
With Jane Wyman & Ray Milland
"Slaves of Babylon"
Richard Widmark
Slavina Wad. Jan. 13th
"FROM HERE TO ETERNITY"
Voted The Year's Best Picture
With Burt Lancaster Montgomery Clift
Deborah Kerr 3 Prints Starting

Announcing for '54 NEW FORD TRUCKS

with **TRIPLE ECONOMY!**



**FORD TAKES THE LEAD IN ALL 3 VITAL FACTORS
THAT MAKE FOR LOWER COST TRUCKING!**

1. Now, only in Ford Trucks—gas-saving, Low-Friction, high-compression, overhead-valve, deep-block engines in all truck models! 115- to 170-h.p.!
2. New Driverized Cabs, Master-Guide Power Steering, Power Brakes, Fordomatic Drive for faster control!
3. New greater capacity! New Factory-Built "6-wheelers," gross up to 48% more!

See them TODAY!

FORD TRIPLE ECONOMY

P.G.A. MORE TRUCK FOR YOUR MONEY!

New Ford F-900 Six Job, G.V.W. 27,000 lbs., G.C.W. 55,000 lbs.

GEORGE H. MEAD, INC.

190 WASHINGTON AVE.

BELLEVILLE, N. J.

AFIANCED TO FORMER LOCAL BOY, NOW NEWARK

Phyllis Dilleo Intends Troth To Robert Edwards; Newark Bell Tele. Employees

Mr. and Mrs. Anthony Dilleo of 90 Dow Street, announce the engagement of their daughter, Phyllis to Robert E. Edwards, son of Mr. and Mrs. Ernest E. Edwards of 75 Tiffany Boulevard, Newark, formerly of Belleville.

The bride-elect graduated from Belleville High School. Mr. Edwards attended Belleville High School and served with the Marine Corps. They are employed by the N. J. Bell Telephone Co., Newark.

To Observe Sacrament Of Baptism At Fewsmith

The Sacrament of Baptism will be observed in Fewsmith Memorial Presbyterian Church this Sunday at eleven o'clock. Dr. Morse will begin a series of three special sermons with his topic, "The Christian Approach to Illness."

On January 17 he will preach on "The Church and Economic Life" and on January 24, "Spiritual Help from Your Dreams."

Youth Sunday will be held January 31, with Fewsmith Youth Director, Edward Brown, of New York City, preaching the sermon and the young people conducting the worship.

HOLY FAMILY CONCLAVE HOST

Annual Conference Of Religious Teachers Filipino Conducted In School Auditorium

The Sixth Annual Community Teacher's Conference of the Religious Teachers Filipino was held at Holy Family School Monday with more than 150 nuns from the Metropolitan Area attending the general assembly in the school auditorium. Msgr. Anthony De Luca, pastor of Holy Family Church, welcomed the gathering.

The morning session was formally opened by the Mother Provincial, Sister Vincenza Ionta, M.P.F. from Villa Walsh. The first part of the program was highlighted by individual discussions by the teachers of their respective age groups. The large gathering visited the different classrooms in Holy Family School and examined exhibits made by the students.

During the afternoon program, following luncheon given by the Holy Family P.T.A., the group heard a talk "Developing the A-L-H-A-B-I-T" by Sister J. Cucuzella, M.P.F. and "Education for World Citizenship" by Sister S. D'Alessio, M.P.F.

Peterson Club Tea Sunday To Close Holiday Events

The Peterson Club of St. Peter's Church will hold a tea, Sunday afternoon, January 10, in the club rooms, from 3 to 5 o'clock, for relatives and friends, bringing to a close their holiday activities.

Mrs. Justin M. McGuire and Mr. William R. Brickell are co-chairmen.

Meeting Of Ladies Guild Of Bethany Lutheran Church

Bethany Evangelical Lutheran Church, New Street, announced that its Ladies Guild meeting will be held Monday, January 18 at 8:00 p.m. With the regular business meeting an interesting film will be shown, titled "If This We Are Prone To Forget."

All members of the Guild and church and their friends are urged to attend. Refreshments will follow.

Local Fiancee



Norma D. Lehmann

Announcement is made of the engagement of Miss Norma Doreen Lehmann, daughter of Paul Lehmann, of 90 Overlook Avenue, and the late Mrs. Lehmann, to Ensign Robert A. Mayers, USN, son of Mr. and Mrs. Robert E. Mayers, of 28 Perry Street.

Miss Lehmann, a graduate of Belleville High School, is employed by the Prudential Insurance Company, Newark. Ensign Mayers was graduated from Belleville High School and Rutgers University, where he was a member of Tau Delta Phi. He is also a member of Belleville Lodge, F. & A.M., and the New Jersey Consistory and is a Chevalier of Honor of the De Molay. At the present time he is stationed aboard the USS Hunt at Newport, Rhode Island.

No date has been set for the wedding.

OUR CLASSIFIED SECTION BRINGS QUICK RESULTS TO ADVERTISERS

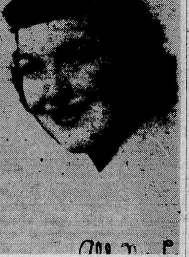
"Dollars Of Scholars" Will Feature A.A.A. Meeting

A regular meeting of the Sisterhood of a congregation A.A.A. will be held on Tuesday, January 12 at 8:30 p.m. Following the business meeting, the Belleville Citizens' Committee for State Aid in Education will present a program, entitled "Dollars of Scholars" which has been written and directed by Mrs. Lenore B. Willette.

This program, an explanation of present school problems has been presented before the local P.T.A. groups. The cast is composed of Otis Brown, Robert Cassady, William Chapman, Mesdames Evan Thomas, Charles Cass, Stephen Orsak of 58 Dow Street. Miss Copenhaber is a graduate of Belleville High School and is employed by Public Service Electric and Gas Co., Newark. Her fiancé attended Belleville schools, served in the U.S. Navy and is employed by Eastwood Neale Corp. of Belleville.

A date has been set for the wedding.

Affianced



Miss Eleanor Grace Miller

Mrs. Theodore Miller announces the engagement of her daughter, Eleanor Grace, of 147 Ferry Street, Newark, formerly of Belleville, to Mr. Herbert Ochse, son of Mr. and Mrs. Howard Ochse, of 20 Smith Street.

Miss Miller is a graduate of Essex County Vocational and Technical High School and is now employed at Vivian's Beauty Shop, Newark. Mr. Ochse was graduated from Belleville High School and is now employed at Chatham Electronics Corporation, of Newark.

PLAY IN SCHOOL NO. 8 CELEBRATES BOOK WEEK

"Visit To Story-Book Land" Presented By Sixth Grade

Book Week was celebrated at School No. 8 recently with a "Visit to Story-Book Land" as presented by the sixth grades. The play was directed by Miss Stacy Yaskell and Miss Eleanor Walsh.

In visiting story-book land the children saw their favorite books and book characters come to life and sing and dance just like ordinary boys and girls.

The cast included Ronald Sachero, Lois Link, James Sette, Jacquelin Parrillo, James Claffi, Leonard Goodman, Michael Hanley, Joseph Nucel, Richard Burtan, Walter Gonzales, Conchetta Sauchelli, Charlotte Festa, Carl Thomas, Carol Connor, Colin Campbell, Robert Russonella, Philip Seiberick.

Also, Daniel Sher, Patricia Young, Marie Cacer, Patricia Maloney, Francine Pendubury, John Bendel, Donald Bender, Thomas Wroley, Gertrude Hogenmuller, Fred Petrosino, John Condon, Dora Glass, Sandra Forlenza, Andrea Batz, Alfred Wright, Michael Yudin, Donna Jones, and Paul Garbin.

Trudy Horenmuller entertained with several piano selections. Fred Petrosino, a sixth grader, played the accordion. Miss Kathryn Condon accompanied the singers and dancers.

Delaporte & Mac Kinnon

PLUMBING - HEATING TINNING

70 Belleville Avenue, Belleville, N. J. Phone Plymouth 9-4323

DE BAGGO BROS.

Domestic & Foreign Male Bicycles and Accessories EXPERT REPAIRING 326 Washington Avenue Plymouth 9-5379

Bride - Elect



Diane M. Copenhaber

Mr. and Mrs. Edward Copenhaber of 80 Washington Avenue, announced the engagement of their daughter, Diane M. to Joseph E. Orsak, son of Mr. and Mrs. Stephen Orsak of 58 Dow Street. Miss Copenhaber is a graduate of Belleville High School and is employed by Public Service Electric and Gas Co., Newark. Her fiancé attended Belleville schools, served in the U.S. Navy and is employed by Eastwood Neale Corp. of Belleville.

A date has been set for the wedding.

DOUBLE WINNER IN BIBLE CLASSES' ATTENDANCE RACE

Everyman's Class Is Not Dismayed Over Duel Win Of Montgomery Class

An attendance contest was agreed upon between the Montgomery Bible class and Everyman's Bible class for the month of December and January.

During the month of December, it reported the lead changed sides with Every Sunday but now, however, Montgomery has come through with a double leader by taking the lead for the first Sunday in January after topping the attendance record of December's final Sunday.

The Everyman's Class, in gracious bows to Montgomery but as yet the members have not taken this lead as a sign of defeat, but a sign to alert their fellow members to the cause.

Class leader of Everyman's Archie Donaldson, has taken a well-chosen subject for his message this Sunday, the title being, "He Went Forward."

Faithful Dave Williams has been playing a few fine selections preceding the following service. It is advised by Wesley Decker that an early arrival to the class will result in listening to pop music.

Everyman's Bible Class is non-denominational, and meets each Sunday morning from 9:30 A. M. to 10:30 A. M. at the Masonic Temple. A warm fellowship is found in this Class and its members wish to share it with any men who desire to enjoy an hour of Christian friendship.

Confraternity Of St. Peter's Rosary Meeting

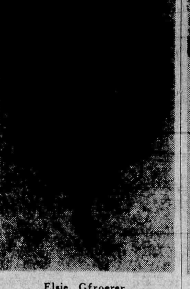
The regular monthly meeting of St. Peter's Rosary Confraternity took place on Monday evening. In the business that transpired, the date for the annual Confraternity Breakfast was scheduled for Sunday, March 7.

It was announced that plans are already in the making for a Marian Year Pilgrimage to be held at some future date. There was a formation of a Merchandise Club under the direction of Mrs. Mae Brown.

Following the meeting, a Social Hour was held with the serving of refreshments on colorful new table cloths by Mrs. Rose Bianchi and her assisting committee.

The Chairlady for the Social Hour on Monday evening, February 8 is Mrs. Irene Gallagher, assisted by Mrs. Jane Barrett, Miss Margaret Logue, Mrs. Mary Rose Bell, Mrs. Mildred Sili, Mrs. Rose Donnelly, Mrs. Ann Cesta, Mrs. Margaret Condit, Mrs. Sadie Bennington, and Mrs. Esther Conley.

Betrothal Told



Elsie Gfroerer

Mrs. Elsie Gfroerer, of 28 Fairview Place, announced the engagement of her daughter, Mildred Rosemary, to Joseph U. Bradley, son of Mr. and Mrs. Evelyn G. Hannon, of 26 Perry Street, at a party held in their honor on December 22, 1952.

Both are graduates of Belleville High School. Miss Gfroerer was graduated last June, while Mr. Hannon was graduated in June of 1946. Mr. Hannon is also a graduate of Alabama University and a member of the fraternity of Delta Sigma Phi. He has served as a first lieutenant in the Air Force and is now employed as an aeronautical engineer in the New York office of Republic Aviation.

At present Miss Gfroerer is employed as a clerk-typist in the Revenue and Finance Department, of Belleville Town Hall.

ANNUAL CHURCHES COUNCIL MEETING HELD AT FEWSMITH

Dinner, Business Session, Reports And Films Touted At Fewsmith Memorial

The annual meeting of the Belleville Council of Churches will be held tonight at Fewsmith Memorial Presbyterian Church beginning with a dinner at six-thirty o'clock.

Dr. James K. Morse, president, will preside at the business session and show Kodachrome slides of the churches and the work of the Daily Vacation Bible School. Mr. Albert Helm will give a treasurer's report. Rev. P. J. Anson presented the report of the report of the Daily Vacation Bible School, Mrs. Katherine Luthers the year's work of the Council of Churches, Women and other activities will be announced. Mrs. Clara J. Smith, Jr. will give a secretary's report. A film-strip on church unity, "Big Enough to Tackle" will be shown. Mr. Harry Brumbach, Vice President will give the opening prayer.

The dinner is being served by members of the Fewsmith Women's Guild under the direction of Mrs. George Newman, and Mrs. William Maser. Detailed plans for the Church School Workshop, Sunday, January 24th will be announced.

Pre-School Group Of No. 3 School Has Party

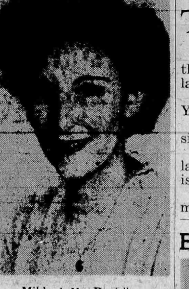
Santa Claus paid a sojourn visit to the Pre-School Section of the Parent Teachers Association of School Number Three, at its annual children's party. The party was held at the home of Mrs. William Irvine of 3 Belmont Street.

Mrs. Herman Knuppel acted as Santa and distributed coloring books and crayons to the children. Among the children present were: Wendy and William Irvine, Christine Mertz, Denise and Claudia Lepre, Carol Biazore, Timothy Courney, Charles and John Hollweg, Mary Ellen and Kathleen Brown, Barbara Ann Knuppel, Keith and Caprice Thompson, and John Di Fazio.

Serving on Mrs. Irvine's committee were: Mrs. Raymond Mertz, Jr., Mrs. Norman Thompson, Mrs. Edward Burns, and Mrs. Charles Hollweg.

Refreshments were served as the children received gaily decorated balloons.

Engaged



Mildred M. Boniello

Mr. and Mrs. Charles Boniello, of 7 Moore Place, announce the engagement of their daughter, Mildred Rosemary, to Joseph U. Bradley, son of Mr. and Mrs. Evelyn G. Hannon, of 26 Perry Street, at a party held in their honor on December 22, 1952.

Miss Boniello is a graduate of Belleville High School and is now employed with the New Jersey Bell Telephone Company, Bloomfield. Mr. Bradley is a graduate of Central High, Newark. A sergeant in the U. S. Marine Corps for four years, he is now stationed at Camp Lejeune, N. C. He is returning from combat duty in Korea.

Lecture And Movie Stated For No. 9 P.T.A. Meeting

An interesting program has been planned for the monthly Parent-Teacher Meeting at School Number Nine on Tuesday, January 12th at 8 p.m. After the business meeting, M. Bernice Garziglia, Home Economics Adviser of the Public Service Electric & Gas Company, will present "Menus in Party Dress," a lecture and movie. There will be many door prizes. Hostesses for the evening will be the sixth grade mothers.

This Week At The Reformed Church Of Belleville

"Looking at the Cross of 1953, Planning for 1954" will be the topic for the Consistory Lesson to be held at the Chapel in the Belleville Reformed Church, Friday evening at 8:00 p.m.

The morning service, Sunday, will have as its sermon topic "The Right Direction." Prior to the services, the Church School will hold classes for all ages, commencing at 9:15 a.m.

The Church, in its 25th year, invites everyone to its doors.

Emily Derbyshire Wed To Joseph Gartlan

Mrs. Gladys Derbyshire of 18 Clinton Street, announces the marriage of her daughter, Emily Frances to Joseph Gartlan, son of Mr. and Mrs. Joseph Gartlan of Delevon Avenue. The marriage took place at St. Peter's Church, New Year's Eve with Father Hourihan officiating.

The bride's twin brother, Frank Derbyshire, gave his sister in marriage.

Miss Marie Mariner was maid of honor. Donald Gartlan, brother of the groom, acted as best man. Mrs. Gartlan is the daughter of the late James Derbyshire.

The couple are graduates of Belleville schools and will make their home in Kentucky.

Engagement Told



Jean Longo

Mr. and Mrs. John Longo, of 26 Hilton Street, announce the engagement of their daughter, Jean, to John Guarino, S.A., U.S.N., son of Mr. and Mrs. Vincent Guarino, of Nutley. Miss Longo is a senior at Belleville High School. Her fiancé is presently stationed at a naval base in Florida.

The morning service, Sunday, will have as its sermon topic "The Right Direction." Prior to the services, the Church School will hold classes for all ages, commencing at 9:15 a.m.

The Church, in its 25th year, invites everyone to its doors.

Local Finance

Mrs. Mary Gilchrist, of 472 Washington Avenue, has announced the engagement of her daughter, Irene Maria, to Robert James Freitag, of 215 Ralph Street.

Miss Gilchrist is a senior at Belleville High School and employed with the Mutual Bond Life Insurance Company. Mr. Freitag is attending Seton Hall University where he is a member of the Seton Hall Glee Club and the Pershing Rifles R.O.T.C.

Repeat Sale

By Popular Demand

The Public Purchased Thousands Of Our Famous Jackets Before Christmas. Now Demand Is So Great We Are Continuing This Sale For Limited Time Only.

MENS BOYS AND GIRLS
OUTDOOR JACKETS
BUY DIRECT FROM THE FACTORY
SAVE 70%
Below Wholesale

Water Repellent Gabardine Quilted Lining \$6.50 Reg. 15.95

100% All Wool Parka SUEDE Quilted Lining Reversible \$9.70 Reg. 25.00

Thousands More In All Sizes, Colors and Styles

Buy From The Factory All buses going to Penn Station pass within 1 block of our factory. Ask the driver. Hours: 9 to 5 Mon. Thru Sat.

HIGHLANDER SPORTSWEAR
91 EDISON PL. cor. LAWRENCE ST.
NEWARK, N. J. MA 3-9353

ACCESSIBLE TO YOU ALONE
... and safe from fire, theft and loss.

A safe deposit box provides one place where all your papers . . . contracts, bonds, securities, and valuables . . . are all together and available to you only.

WE NOW PAY 2% INTEREST PER YEAR ON SAVINGS ACCOUNTS.

PEOPLES NATIONAL BANK AND TRUST COMPANY
237 WASHINGTON AVENUE
BELLEVILLE, NEW JERSEY

DE BAGGO BROS.
Domestic & Foreign Male Bicycles and Accessories EXPERT REPAIRING 326 Washington Avenue Plymouth 9-5379

EASY TERMS ARRANGED

Here are a few advantages that you receive when you do business with Michael V. Albertine Insurance Agency:

1. Take up to 9 months to pay for your insurance premium.
2. We will help you fill out New Jersey Accident report forms, together with Insurance Company forms.
3. For a (\$1,000) premium you can join our Auto Club plan; whereas, you might now be paying \$75.00 per year or more.
4. Your policies can be renewed with more coverage and at a savings.
5. This Insurance Agency is open 24 hours a day - 7 days a week.
6. The Michael V. Albertine Agency is a local agency; therefore, you don't have to waste time in order to go out of town.
7. We are experienced, reputable and represent only the largest and strongest companies.
8. This Agency will analyze your policies free and we will save you money and give you personal insurance service.

MICHAEL V. ALBERTINE
Insurance Counsellor
631 Joramelon St., Belleville, N. J.
Phone PL. 9-5822

Therefore, won't you give us an opportunity to be of service to you.



SPOTLIGHT on SPORTS

By Bob Gorlin

Continues Cage Career



John Kaldy

John Kaldy, who played on the Belleville High School Basketball team in 1948, '49 and '50, is playing center for the 1953-54 edition of the Amphibious Force Gator basketball team. The Gators, whose players are drawn from ships and units of the entire Amphibious Force, U. S. Atlantic Fleet, have their home court at the U. S. Naval Amphibious Base at Little Creek, Virginia.

With one-third of their season behind them, the Gators have a five-victory, two-defeat record. Kaldy, a storekeeper third class regularly stationed on the landing ship, dock USS Donner, is playing his third season for the Gators.

Besides playing on the Belleville High School team which won the Essex County championship in 1950, Kaldy has trod the hardwood for Potomac State College at Keyser, West Virginia.

The Game Of Games

Not enough can be written when it comes to discussing the thrilling one-point, 58-57 victory recorded by Belleville over Bloomfield Tuesday night before a sell-out house. Call it spine-tingling, exciting, sensational, or by any other adjective you like. If you were one of the several hundred lucky witnesses that braved a light drizzle to be on hand for the Belleville-Bengal clash you'll know just what I mean. The standing room only crowd was left limp from cheering, yelling and screaming following the final whistle of the hardest fought skirmish of the dribbling season that is rapidly nearing the half-way mark.

Avid basketball fans can travel near and far, make the trek to Madison Square Garden to see the collegians, or the pros in action, but seldom will they ever see as exciting a basketball game from start to finish like the recent fracas that saw Andy Leyble's free throw conversion in the final two seconds of play decide the eventual outcome. For sheer excitement that tilt would be hard to beat in any league. The two coaching masters of Essex County, Jitty Wische and George Cella had a field day during the final minutes of play as each tried desperately to out maneuver the other.

It goes without saying that the victory turned in by Wische's spirited crew was a sweet one to win. Belleville fans well remember about 10 months ago when the high flying Blue and Gold were entered in the Essex County Basketball Tournament but were eliminated by Bloomfield, 58-53. The triumph was a big one, a very big one for Belleville to take. On the other hand, the loss by the narrowest of margins was a bitter pill for Bloomfield, defending State Champions to swallow. The tie, as close as a team possibly could without coming out on top. With the score knotted at 57-57 on Pat Grosso's 26th and 27th points of the night, Bloomfield put on the "freeze" with a minute and 30 seconds left. Cella's strategy was to have his ace Herb Miller get off a final shot but the excellent plan never did materialize. The eventual winning play came with only two seconds to go. Leyble, as scrappy a player around, came up with the ball under Bloomfield's basket and was about to take off like a bolt of lightning in order to get off the final shot. He never did get close to the Belloby basket. Over anxious to get the ball, Art Russomano fouled Leyble as the tension skyrocketed to a fever pitch. Leyble, with ice water in his veins, dunked the first foul and it was all over as time ran out before the Bengals could get off another attempt.

Leyble and Grosso, the game's two heroes, along with the entire Blue and Gold team, were swamped by over-zealous well wishers as they tried to plover their way towards the dressing room.

For those who missed the game of games, that final foul of course was the climax of a hard fought, dog-eat-dog struggle. The nifty and slick started right from the opening minute of play. Never did either team enjoy more than a three-point lead as the two quintets saw the score deadlocked 19 times and change hands another 19 times.

A lost art returned in full bloom in the Tuesday night donkeybuck, the slowly vanishing two-handed set shot. The rage in recent seasons has turned to the swishing of the nets from the outside quick battle push shots. Richie Veith, Grosso and Miller brought back the style of yesterday as they lopped the ball cleanly through the hoops. No less than eight two-handed set shots were tallied in the first half of play.

Bellboys Drop Bengals 58-57 With Clutch Shot

Leyble Sinks Foul Shot In Final Seconds For Win In Game Having 18 Lead Changes; Grosso Stars

By Eugene Serpentelli

Andy Leyble's clutch foul shot with two seconds remaining, enabled Belleville's Blue and Gold to down the Bloomfield Bengals 58-57 in the High School gymnasium, Tuesday night.

The game was a thriller all the way with the score being tied no less than 18 times. Belleville jumped off to a fast lead in the first stanza but a couple of quick baskets gave Bloomfield an edge 15-13 at the quarter. The Bellboys, picked up a basket more than Bloomfield during the second quarter and the game was tied at halftime, 23 all.

Belleville again jumped into the lead during the third quarter and at the end of the period, the Bellboys led 42-41.

Then came the hectic fourth quarter. The two teams battled on an even keel until, with two minutes remaining, a Bloomfield goal put the Bengals ahead 57-56. But the Bellboys were not to be stopped. A one hand jump shot by Pat Grosso tied the score. Bloomfield then attempted to freeze the ball for the last shot.

Sinks Winning Foul

The freeze was successful but the Bengals did not get the last shot. As Andy Leyble took a rebound, he was fouled. Before a sea of hysterical crowd saw the first of his two foul shots, to give Belleville the victory.

But Leyble was not the only bright spot on the Belleville squad. Pat Grosso, single-handedly kept Belleville in the game as he hit on a phenomenal percentage of his shots, and finished the game with 27 points. Sharp shooting Patsy has now been high scorer in three of four games he has played.

Andy Leyble also hit double figures for Belleville as he netted 19 markers. Richie Veith led for 5 points, Rocco Cafone got 6, and Gary Burman, 4. Bob Taylor netted a goal and Bill Giese a foul shot. Bloomfield had two men in the twenties as Miller collected 22 points and Marotti, 20. Ruvo, Russomano and Turton chipped in with 6, 5, and 4 points respectively.

The victory enabled the Bellboys to push their percentage to 50%. To date they have three straight, after dropping games to Passaic and Garfield. Belleville will next entertain Hillsdale. The Comets were crushed in their last game by St. Mary's, 37-32. I predict they will provide Belleville with its fourth victory.

Belleville	Bloomfield
Grosso, 27	Miller, 22
Veith, 19	Marotti, 20
Wische, 15	Ruvo, 6
Cafone, 6	Russomano, 5
Burman, 4	Turton, 6
Giese, 4	Giese, 4
Veith, 4	Miller, 4
23 12 17 16-58	15 10 16 16-57

Officials — J. Griffin, S. Griffin

FENCING FOR THE GIRLS OFFERED BY RECREATION DEPT.

Instruction Will Be Given For A Class Open To Girls Of 13 Years And Over

The Recreation Department will begin a new activity for the girls this month. Supt. of Recreation, Robert E. Cook has announced that arrangements have been made to offer instruction in Fencing. Classes will start during the last week of January. Miss Lillian Ramirez, who is doing such a magnificent job with the city basketball program will instruct the new group.

The Fencing Class will be open to all Belleville residents thirteen years of age and older. Those interested are asked to register at the Recreation House either by mail, 407 Joramelon Street, or by Supt. of Recreation Robert E. Cook or by phone, 314-4242. It may be necessary to limit the class so all who wish to enroll should do so as soon as possible.

Fencing, like tennis and swimming is a sport where the distasteful side is left out with the fun. It is an intense, thrilling, sport, which develops superb poise, speed, and agility. Any young person who takes part in this activity will most definitely be the better for it.

The performance of Grosso deserves a goodly portion of the descriptive adjectives as he was responsible for almost 50 per cent of the team's entire scoring output. With Grosso's two big players, Bob Taylor and Gary Burman fouling in the second half of play, Belleville's chances of victory took a serious nose-dive as the Bengals had a much taller team on the court as a result.

Grosso and his teammates, however, never gave up the ghost. Of the 33 points chalked up by the Bellboys following halftime intermission, Grosso was personally responsible for 19. He performed like a perfectly oiled machine, driving through the opposition like a locomotive for difficult basket attempts or he stayed outside and as if working with the use of radar, coolly swished the nets with his famous one-handed push or two handed set shot.

The 58-57 Belleville victory was only the first round of the Bengal-Bellboy rivalry. For the first time the two power opponents will play on a home-and-home basis. The engagement will be for the Belleville-Bloomfield gym on Tuesday, January 19. What a game that promises to be as the Cellerman plan to go all out in an effort to turn the tables.

WEIGHT LIFTING CHAMPIONSHIPS SCHEDULED FEB. 3

First Championship For Barbell Club; Bob Cook Will Instruct Entrants

The Belleville Barbell Club will hold its first Weightlifting Championship on Wednesday, February 3, starting at 7:00 p.m. This contest will be held in the Barbell Club Gym in the Belleville Municipal Stadium. All winning lifts will be posted on the Club Record Board as official Town Records.

Classes will be according to the lifters weight as follows: 55 lbs.—80 lbs., 85 lbs.—105 lbs., 105 lbs.—112 lbs., 112 lbs.—118 lbs., 118 lbs.—126 lbs., 126 lbs.—132 lbs., 132 lbs.—145 lbs., 145 lbs.—151 lbs., 151 lbs.—158 lbs., 158 lbs.—165 lbs., 165 lbs.—195 lbs. and up. Records may be established in two of the following lifts: press, snatch, jerk, dead lift, bench press and squat.

All lifts will be performed on the new Olympic Barbell recently acquired by the Club. Lifters who wish to compete in the Club Championships may receive special instruction at the Club Gym each Tuesday or Thursday afternoon or Monday evening. Bob Cook, who instructs weightlifting, will train the entrants in the correct form required in the various lifts.

The Barbell Club, which has been a Recreation Department activity for over two years, boasts a total membership of one hundred and thirty-five. Periodic championships contests will be the future practice of the Club. Although the benefits of weightlifting are derived from just training and practicing the various exercises, it is competition that brings out the best in the lifters, and which brings out much of the fun and sport of weightlifting.

OUR CLASSIFIED SECTION BRINGS QUICK RESULTS TO ADVERTISERS

RECREATION HOOP LEAGUE REOPENS WEEK OF JAN. 4

Tortorellos Still Dominate Monday Loop, Trotters Unbeaten In Wed. League

The Basketball Leagues sponsored by the Belleville Recreation Department, Elmer S. Hyde, Director, will resume play the week of January 4, 1954.

In the Monday Night 8 Team Senior League Loop the Tortorellos won the first round (4-1) with Roy's Sport Shop, Hart Messing and Strats second (5-2).

The Wednesday Night Intermediate 10 team League has one undefeated team at the half way mark of the first round. On top are the Trotters (6-0). A three way tie for second slot has the Continentals, Hilltops and Imperials even (4-1).

The Saturday Morning Elementary School and Junior Leagues, place No. 1, 7 and 10 Schools out in front (2-0). So the Cavaliers and the 5-D's are set.

PRIVATE PARKING FACILITIES To render service justifying the confidence of families we serve always guides our efforts. We consider each expression of your confidence a sacred trust and proceed in a manner to make it apparent that your judgment has been well directed.

COMFORTABLY AIR CONDITIONED IRVINE AND SON FUNERAL HOME

WM. V. IRVINE • Directors • WM. V. IRVINE, JR.
276 WASHINGTON AVE., BELLEVILLE, N. J.
Telephone PLYMOUTH 9-1114



The '54 BUCK's got it—The BIG CHANGE you've been hoping for!

BUICK the beautiful buy

THE instant you see these 1954 Buicks, you'll know that something sensational has happened in automobile styling. Here is vastly more than the usual model changeover. Here is vastly more than could be done just by warming over what Buick had before. Here is something accomplished by going far beyond artful face-lifting. Here is that rarity of rarities—a completely new line of automobiles.

But Buick didn't stop with the bolder, fresher, swifter-lined beauty you see in raised and lengthened fender sweep—in the huge and back-swept expanse of windshield—in the lowered roofline—in the host more glamorous features of exterior modernity.

They upped all horsepower to the highest in Buick history.

They engineered a new V8 for the SPECIAL—and in the process came up with new Power-Head Pistons that boost gasoline mileage in every engine.

They brought to market a sparkling newcomer with a famous name, the Buick CENTURY—a car with phenomenal horsepower for its weight and price—a car with more pure thrill per dollar than any Buick ever built.

And they did all this without change of the price structure which, for years, has made Buick the most popular car at its price in the world.

We invite you to come in and inspect these great beauties, these great performers, these great buys. Then you'll see why the Detroit previewers are already saying, "Buick's the beautiful buy!"

When better automobiles are built Buick will build them

ON DISPLAY JAN. 8

BELLEVILLE-NUTLEY BUICK CO.
66-68 WASHINGTON AVE. NUTLEY NUTley 2-0500

Holy Name Society Has Election Of New Officers

At the December monthly meeting of St. Peter's Holy Name Society, the following officers were elected for the coming year: President, Martin A. Malague; Vice-President, Louis A. Smith; Secretary, Edwin R. Kowalski; and Treasurer, Gary Vanderbilt.

On Sunday, January 10, at 8:00 p.m., installation of these officers will be held together with reception of new members in St. Peter's Church. The service will close with Benediction of the Most Blessed Sacrament and will be followed by a brief business meeting and supper in the School Cafeteria. Relatives and friends of the new officers as well as all members of St. Peter's Holy Name Society are services in Church.

In the standings, the Belleville Lodge lags in their division with an even split in the won, lost columns, while the Craftmen have won 13 and dropped 28.

ing the pace in the Junior League (2-0).

OUR CLASSIFIED SECTION BRINGS QUICK RESULTS TO ADVERTISERS

KIERNAN

Dignified Funeral Service

AVAILABLE TO ALL REGARDLESS OF FINANCIAL CIRCUMSTANCES

NON-SECTARIAN

KIERNAN FUNERAL HOME

GEORGE F. KIERNAN

101 UNION AVE., BELLEVILLE, N.J.

PLYMOUTH 9-3503

Times Classified Advertisements

To Sell, Buy or Trade Telephone PL 9-2300

Aluminum Windows
ALUMINITE TRIPLE CHAN-
NEL COMBINATION WIN-
DOWS, manufactured by GEN-
ERAL BRONZE CORPORATION
Have every feature and are re-
sined, no obligation. Telephone
Nuttley 2-2073.

Asphalt Driveways
GABRIELE BROTHERS - Asphalt
Driveways and masonry. 900
East Centre Street; telephone
Nuttley 2-9170.

J. FERRARO AND R. CUOZZO
Parking lots, permanent drive-
ways, concrete work. Trojan As-
phalt Co. Nuttley 2-9557, 2-528

Carpenters & Builders
COMPLETE HOME MAINTEN-
ANCE, also alterations and
repairs jobs. Concrete mixer for
Mrs. Louis Scalfitto, 143 Passaic
Avenue, Telephone Plymouth 9-
5012.

Tile Block Ceilings
INSTALLED, reasonable. Call PL
9-0823.

Want the personal touch
to take what you need.
HOME IMPROVEMENTS?
This plus:
• Financing
• Guaranteed satisfaction
• Reasonable prices
• Years of experience
are yours.
Give me a call day or night.
FRANK CANDILORO
PL 9-2515

ALTERATIONS OR REPAIRS
including ceilings, roofs, gut-
ters, garages, power enclosures,
30 years experience; estimates;
reasonable prices. Ben Robbins,
16 So Wilbur St. PL 9-1315.

FRANK PRATAVA, general con-
tractor, building, alterations,
repairs and paintings. 9 Bellevue
Ave. Belleville, PL 9-7788. 1-22

Child Care
NUTLEY PARK NURSERY
SCHOOL, hours 8 a.m. - 5:30
p.m., transportation provided, reg-
istered nurse; trained teacher.
Telephone Nuttley 2-0999.

Decorators & Painters
CARL BALZER, JR., 189 Holmes
St., painting and paperhanging,
free estimates. Call PL 9-5018. 1-22

PAINTING & PAPERHANGING
For a Good Job
At a Reasonable Price
Call
Ed. Zinner
Bloomfield 2-7199-W.

Electricians
COMPLETE ELECTRICAL SER-
VICE, commercial, industrial,
residential. Outlets, lights, switches
installed. Essex Electric Co., PL
9-1919 or PL 9-1860. T. F.

For Rent
FURNISHED ROOM, next to
bath, private home, Greylock
Parkway. No other roomers.
Block from No. 13 bus. Parking
for car. Breakfast optional. Gen-
tlemen only. PL 9-0193. 12-24

LARGE FRONT ROOM, nicely
furnished; convenient; private
home, references. PL 9-3916. 1-21

2 LARGE ROOMS, Kitchennette
& bath. Adults or business cou-
ple preferred. PL 9-4274. 1-15

FURNISHED ROOM, 2 windows,
large clothes closet, best res-
idential section; convenient to all
transportation. PL 9-7280. 1-15

GARAGE, Van Houten Place, near
DeWitt Ave., straight paved
driveway. Call PL 9-9479.

GARAGE, 404 Cortlandt St. PL
9-9794. 1-22

3 ROOM APARTMENT, gas and
electric supplied; no heat, \$45.
per month. 57 Cortlandt St. Bel-
leville. 1-22

**LARGE COMFORTABLE SLEEP-
ING ROOM**, next to bath, ample
closets space; residential. PL
9-210. 1-23

SLEEPING ROOM, twin beds,
couple or two adults, private
bath, private entrance; no cook-
ing. PL 9-7788. 1-22

For Sale
THOUSANDS of yards of materi-
al for dresses and draperies at
great savings. SLIP COVER
SPECIAL - 3-pc. set with 5
cushion custom made from wash-
able bark cloth with zippers, \$69.
Curtains, bed spreads and drapes
made to order. Visit our store and
see materials galore. Open eve-
nings except Tuesday and Wed-
nesday. 3 Ridge Shop, 9
Road, No. Arlington. Kearny 2-
0087. 10-9

3 MEN'S OVERCOATS, practical-
ly new, 4 cord seasoned wood,
for fire place or furnace. Stock-
line baby carriage, and miscellan-
eous items. Call PL 9-4421 after
7 p.m. 1-23

PIN-UP PICTURES to brighten
up your den, attic room, base-
ment play room or summer home.
Large assortment of pin ups, com-
ic, baby pictures, birds, dogs, etc.
Pictures are passepartout with
glass or plastic front, bound with
paper or cloth binding and range
in size from 4" x 5" to 16" x 20".
Price range 10 to 50 cents; reduc-
tion quantity jobs. 188 Malcolm
Ave. Belleville, PL 9-3094. Open
daily and evenings 'til 9 p.m. 1-22

ATTENTION! I buy papers and
magazines; scrap iron and
metal; rags, mattresses; sinks;
bathtubs and furnaces. Immediate
pickup. Telephone Nuttley 2-3768.

**ALWAYS PAYING TOP DOL-
LARS**; rags, 3c lb. iron, brass,
copper, metals. Singer sewing ma-
chines, furnaces, papers, 40c per
100 lb. Immediate pickup. Kearny
Scrap Metal, 12, 20, 30, 40, 50, 60,
70, 80, 90, 100, 110, 120, 130, 140,
150, 160, 170, 180, 190, 200, 210,
220, 230, 240, 250, 260, 270, 280,
290, 300, 310, 320, 330, 340, 350,
360, 370, 380, 390, 400, 410, 420,
430, 440, 450, 460, 470, 480, 490,
500, 510, 520, 530, 540, 550, 560,
570, 580, 590, 600, 610, 620, 630,
640, 650, 660, 670, 680, 690, 700,
710, 720, 730, 740, 750, 760, 770,
780, 790, 800, 810, 820, 830, 840,
850, 860, 870, 880, 890, 900, 910,
920, 930, 940, 950, 960, 970, 980,
990, 1000. 1-22

TRAFFIC MAN, ability to type re-
quired; good opportunity Bel-
leville; liberal employee benefits.
State age, experience, salary.
Write Box 220, Belleville Times. 1-15

Instructions
PIANO AND ORGAN STUDIO,
Hazel L. Ellsworth, 275 Little
St., Belleville, N.J. PL 9-7259. 1-22

Water Color, Oil, China Painting
24 Wilson Place
Plymouth 9-7250 1-21

Junk Dealers
ATTENTION! I buy papers and
magazines; scrap iron and
metal; rags, mattresses; sinks;
bathtubs and furnaces. Immediate
pickup. Telephone Nuttley 2-3768.

**ALWAYS PAYING TOP DOL-
LARS**; rags, 3c lb. iron, brass,
copper, metals. Singer sewing ma-
chines, furnaces, papers, 40c per
100 lb. Immediate pickup. Kearny
Scrap Metal, 12, 20, 30, 40, 50, 60,
70, 80, 90, 100, 110, 120, 130, 140,
150, 160, 170, 180, 190, 200, 210,
220, 230, 240, 250, 260, 270, 280,
290, 300, 310, 320, 330, 340, 350,
360, 370, 380, 390, 400, 410, 420,
430, 440, 450, 460, 470, 480, 490,
500, 510, 520, 530, 540, 550, 560,
570, 580, 590, 600, 610, 620, 630,
640, 650, 660, 670, 680, 690, 700,
710, 720, 730, 740, 750, 760, 770,
780, 790, 800, 810, 820, 830, 840,
850, 860, 870, 880, 890, 900, 910,
920, 930, 940, 950, 960, 970, 980,
990, 1000. 1-22

Lost
SAVINGS PASSBOOK No. 43760,
Fidelity Union Trust Company,
Belleville Office, Belleville, N. J.
Finder please return to bank.

PARAKEET, blue chest with grey
wings and back. Very talkative.
answers to name of "Sweetie
Boy". Lost in vicinity of Union
Ave. & Joralemon St. Owner
heart broken. Reward! PL 9-2739.

Mason Contractors
D'ARC & DEVITO, 217 Fairway
Ave., Belleville, N. J., specializing
in garages, sidewalks, brick stoops,
patios, glass blocks, etc. All work
guaranteed. Plymouth 9-9552 or
Humboldt 3-0909.

Mattresses
CUSTOM MATTRESS MAKERS,
complete line of bedding. Matt-
resses made to order. Renovating
same day service. Buy direct and
save. Mattresses and furniture. Free
estimates. Open evening until 9 p.m.
Saturday. 6.86 Franklin Ave. Nuttley
2-0754.

Property Improvement
NEW SIDEWALKS and repairing
New lawns and repair. All labor
work and trucking. V. Sampson,
79 Carver Ave., Belleville, N. J.
PL 9-5859.

Roofers
IF YOUR ROOF LEAKS CALL
HAROLD HARRISON, roof ex-
pert; leaders and gutters installed;
all kinds of roof repairs, chimney
repairs and slate repairs. 315
Chestnut Street, Kearny or tele-
phone Kearny 2-5497.

Tile Contractors
ALTERATIONS and repairs a
specialty. H. H. Moorhouse, tile
and marble contractor, 61 Melrose
St., Nuttley. Phone Nuttley 2-2277.

**TILE WORK DONE REASON-
ABLY**. Walls in ceramic, metal
and plastic, floors in ceramic, rub-
ber or asphalt. Ceilings. No job
too small. John Fort, telephone
Nuttley 2-0253 any time after
6 p.m.

Trucking
MOVING and all kinds of truck-
ing. Michael Conover, tele-
phone Plymouth 9-6339, if no an-
swer call after 6 P. M.

Upholstering
SOFA AND CHAIR BOTTOMS
recovered by your residence. \$7
and \$14. Material and workman-
ship guaranteed. Call Mr. Ken-
nedy at Nuttley 2-4121. 10-1-53 1-22

Wanted To Buy
TOWING FREE! Highest prices
paid for cars and trucks for
scrapping. Helco Auto Wrecking
Co., 34 South Avenue, Kearny.
For immediate pick-up call
Kearny 2-2553; after 6 p.m. call
Bighelow 2-7450.

ATTENTION. We pick up old
magazines, newspapers, or we
pay 40c per 100 lbs. if you de-
liver to us. Also pick up rags,
iron, scrap, metals, batteries, etc.
Residential, 42-44 Clinton Street,
Belleville. Telephone PL 9-4088.

Wanted To Rent
FIVE ROOMS, 1st floor, for
couple and 4 grown children.
Call PL 9-3191. 1-22

Work Wanted
ODD JOBS DONE, rubbish and
dirt removed, cellars and yards
cleaned. French digging. Dump
truck to hire. Market 2-5521, 9
p.m. to 10:30 p.m.

MAN desires light painting job
in Belleville area; cleaning cellars,
etc. Day Phone PL 9-8166, night
phone PL 9-8166. Ask for Mr. El-
lis. 1-23

GOOD WILL USED CAR
1951 STUDEBAKER - 4 Door,
Champion, Low Mileage, Well
Kept Car. 995.00

1950 PONTIAC Chieftrain - Delux 8,
Radio & Heater. 1195.00

1950 FORD Custom - 2 Door,
Radio & Heater. A Well Kept
Car. 895.00

1947 Ford Club Coupe - Radio &
Heater. A Fine Economical
Transportation. 495.00

1946 OLD'S Club Coupe - Radio &
Heater. 395.00

Arrowhead Pontiac, Inc.
645 Washington Avenue
Belleville, N. J. PL 9-6550

Bridge Spanning
(Continued From Page One)
upon the present Straus-Trin-
tion bridge, with a roadway
39 feet wide, capable of handling
three lanes of traffic in each direc-
tion. The movable span is 111 feet
and the tower span another 36
feet. The flanking spans on the
North Arlington side of the river
are approximately 90 feet each, or
179 feet long.

TOWN ORDINANCE
PUBLIC NOTICE is hereby given
that the following proposed ordinance was in-
troduced and passed on first reading at a
meeting of the Board of Commissioners
of the Town of Belleville held Tuesday
evening, Dec. 22, 1953, and further
notice is hereby given that the second
reading of said ordinance will be
conducted by said Board at a meeting
to be held at the Town Hall, Washington
Avenue and Belleville Avenue, Tuesday
evening, Jan. 12, 1954, at 8 o'clock
P.M. when all objections to the passage
of the same will be heard and considered.

FLORENCE R. MOLEY,
Town Clerk.

**AN ORDINANCE PROVIDING FOR THE
VACATION, RELEASE AND EXTING-
UISHMENT OF A PORTION OF BELLA
VISTA AVENUE, IN THE TOWN OF
BELLEVILLE, N. J.**
The Board of Commissioners of the
Town of Belleville, in the County of Bel-
leville, do hereby enact the following or-
dinance:

Section 1. That the portion of Bella
Vista Avenue, hereinafter described, be
vacated, released and extinguished, and
all public right or rights therein
be transferred to the jurisdiction of the
County of Essex, in the State of New Jersey,
the same 6.00 feet to the Northern line
of the Bella Vista Avenue, hereinafter
described, and the same more or less to
the place of BEGINNING.

Section 2. That the portion of Bella
Vista Avenue, hereinafter described, be
vacated, released and extinguished, and
all public right or rights therein
be transferred to the jurisdiction of the
County of Essex, in the State of New Jersey,
the same 6.00 feet to the Northern line
of the Bella Vista Avenue, hereinafter
described, and the same more or less to
the place of BEGINNING.

Section 3. That the portion of Bella
Vista Avenue, hereinafter described, be
vacated, released and extinguished, and
all public right or rights therein
be transferred to the jurisdiction of the
County of Essex, in the State of New Jersey,
the same 6.00 feet to the Northern line
of the Bella Vista Avenue, hereinafter
described, and the same more or less to
the place of BEGINNING.

Section 4. That the portion of Bella
Vista Avenue, hereinafter described, be
vacated, released and extinguished, and
all public right or rights therein
be transferred to the jurisdiction of the
County of Essex, in the State of New Jersey,
the same 6.00 feet to the Northern line
of the Bella Vista Avenue, hereinafter
described, and the same more or less to
the place of BEGINNING.

Section 5. That the portion of Bella
Vista Avenue, hereinafter described, be
vacated, released and extinguished, and
all public right or rights therein
be transferred to the jurisdiction of the
County of Essex, in the State of New Jersey,
the same 6.00 feet to the Northern line
of the Bella Vista Avenue, hereinafter
described, and the same more or less to
the place of BEGINNING.

Section 6. That the portion of Bella
Vista Avenue, hereinafter described, be
vacated, released and extinguished, and
all public right or rights therein
be transferred to the jurisdiction of the
County of Essex, in the State of New Jersey,
the same 6.00 feet to the Northern line
of the Bella Vista Avenue, hereinafter
described, and the same more or less to
the place of BEGINNING.

Section 7. That the portion of Bella
Vista Avenue, hereinafter described, be
vacated, released and extinguished, and
all public right or rights therein
be transferred to the jurisdiction of the
County of Essex, in the State of New Jersey,
the same 6.00 feet to the Northern line
of the Bella Vista Avenue, hereinafter
described, and the same more or less to
the place of BEGINNING.

Section 8. That the portion of Bella
Vista Avenue, hereinafter described, be
vacated, released and extinguished, and
all public right or rights therein
be transferred to the jurisdiction of the
County of Essex, in the State of New Jersey,
the same 6.00 feet to the Northern line
of the Bella Vista Avenue, hereinafter
described, and the same more or less to
the place of BEGINNING.

Section 9. That the portion of Bella
Vista Avenue, hereinafter described, be
vacated, released and extinguished, and
all public right or rights therein
be transferred to the jurisdiction of the
County of Essex, in the State of New Jersey,
the same 6.00 feet to the Northern line
of the Bella Vista Avenue, hereinafter
described, and the same more or less to
the place of BEGINNING.

Section 10. That the portion of Bella
Vista Avenue, hereinafter described, be
vacated, released and extinguished, and
all public right or rights therein
be transferred to the jurisdiction of the
County of Essex, in the State of New Jersey,
the same 6.00 feet to the Northern line
of the Bella Vista Avenue, hereinafter
described, and the same more or less to
the place of BEGINNING.

Section 11. That the portion of Bella
Vista Avenue, hereinafter described, be
vacated, released and extinguished, and
all public right or rights therein
be transferred to the jurisdiction of the
County of Essex, in the State of New Jersey,
the same 6.00 feet to the Northern line
of the Bella Vista Avenue, hereinafter
described, and the same more or less to
the place of BEGINNING.

Section 12. That the portion of Bella
Vista Avenue, hereinafter described, be
vacated, released and extinguished, and
all public right or rights therein
be transferred to the jurisdiction of the
County of Essex, in the State of New Jersey,
the same 6.00 feet to the Northern line
of the Bella Vista Avenue, hereinafter
described, and the same more or less to
the place of BEGINNING.

Section 13. That the portion of Bella
Vista Avenue, hereinafter described, be
vacated, released and extinguished, and
all public right or rights therein
be transferred to the jurisdiction of the
County of Essex, in the State of New Jersey,
the same 6.00 feet to the Northern line
of the Bella Vista Avenue, hereinafter
described, and the same more or less to
the place of BEGINNING.

Section 14. That the portion of Bella
Vista Avenue, hereinafter described, be
vacated, released and extinguished, and
all public right or rights therein
be transferred to the jurisdiction of the
County of Essex, in the State of New Jersey,
the same 6.00 feet to the Northern line
of the Bella Vista Avenue, hereinafter
described, and the same more or less to
the place of BEGINNING.

Section 15. That the portion of Bella
Vista Avenue, hereinafter described, be
vacated, released and extinguished, and
all public right or rights therein
be transferred to the jurisdiction of the
County of Essex, in the State of New Jersey,
the same 6.00 feet to the Northern line
of the Bella Vista Avenue, hereinafter
described, and the same more or less to
the place of BEGINNING.

Section 16. That the portion of Bella
Vista Avenue, hereinafter described, be
vacated, released and extinguished, and
all public right or rights therein
be transferred to the jurisdiction of the
County of Essex, in the State of New Jersey,
the same 6.00 feet to the Northern line
of the Bella Vista Avenue, hereinafter
described, and the same more or less to
the place of BEGINNING.

Section 17. That the portion of Bella
Vista Avenue, hereinafter described, be
vacated, released and extinguished, and
all public right or rights therein
be transferred to the jurisdiction of the
County of Essex, in the State of New Jersey,
the same 6.00 feet to the Northern line
of the Bella Vista Avenue, hereinafter
described, and the same more or less to
the place of BEGINNING.

Section 18. That the portion of Bella
Vista Avenue, hereinafter described, be
vacated, released and extinguished, and
all public right or rights therein
be transferred to the jurisdiction of the
County of Essex, in the State of New Jersey,
the same 6.00 feet to the Northern line
of the Bella Vista Avenue, hereinafter
described, and the same more or less to
the place of BEGINNING.

Section 19. That the portion of Bella
Vista Avenue, hereinafter described, be
vacated, released and extinguished, and
all public right or rights therein
be transferred to the jurisdiction of the
County of Essex, in the State of New Jersey,
the same 6.00 feet to the Northern line
of the Bella Vista Avenue, hereinafter
described, and the same more or less to
the place of BEGINNING.

Section 20. That the portion of Bella
Vista Avenue, hereinafter described, be
vacated, released and extinguished, and
all public right or rights therein
be transferred to the jurisdiction of the
County of Essex, in the State of New Jersey,
the same 6.00 feet to the Northern line
of the Bella Vista Avenue, hereinafter
described, and the same more or less to
the place of BEGINNING.

Section 21. That the portion of Bella
Vista Avenue, hereinafter described, be
vacated, released and extinguished, and
all public right or rights therein
be transferred to the jurisdiction of the
County of Essex, in the State of New Jersey,
the same 6.00 feet to the Northern line
of the Bella Vista Avenue, hereinafter
described, and the same more or less to
the place of BEGINNING.

Section 22. That the portion of Bella
Vista Avenue, hereinafter described, be
vacated, released and extinguished, and
all public right or rights therein
be transferred to the jurisdiction of the
County of Essex, in the State of New Jersey,
the same 6.00 feet to the Northern line
of the Bella Vista Avenue, hereinafter
described, and the same more or less to
the place of BEGINNING.

Section 23. That the portion of Bella
Vista Avenue, hereinafter described, be
vacated, released and extinguished, and
all public right or rights therein
be transferred to the jurisdiction of the
County of Essex, in the State of New Jersey,
the same 6.00 feet to the Northern line
of the Bella Vista Avenue, hereinafter
described, and the same more or less to
the place of BEGINNING.

Section 24. That the portion of Bella
Vista Avenue, hereinafter described, be
vacated, released and extinguished, and
all public right or rights therein
be transferred to the jurisdiction of the
County of Essex, in the State of New Jersey,
the same 6.00 feet to the Northern line
of the Bella Vista Avenue, hereinafter
described, and the same more or less to
the place of BEGINNING.

Section 25. That the portion of Bella
Vista Avenue, hereinafter described, be
vacated, released and extinguished, and
all public right or rights therein
be transferred to the jurisdiction of the
County of Essex, in the State of New Jersey,
the same 6.00 feet to the Northern line
of the Bella Vista Avenue, hereinafter
described, and the same more or less to
the place of BEGINNING.

Section 26. That the portion of Bella
Vista Avenue, hereinafter described, be
vacated, released and extinguished, and
all public right or rights therein
be transferred to the jurisdiction of the
County of Essex, in the State of New Jersey,
the same 6.00 feet to the Northern line
of the Bella Vista Avenue, hereinafter
described, and the same more or less to
the place of BEGINNING.

Section 27. That the portion of Bella
Vista Avenue, hereinafter described, be
vacated, released and extinguished, and
all public right or rights therein
be transferred to the jurisdiction of the
County of Essex, in the State of New Jersey,
the same 6.00 feet to the Northern line
of the Bella Vista Avenue, hereinafter
described, and the same more or less to
the place of BEGINNING.

Section 28. That the portion of Bella
Vista Avenue, hereinafter described, be
vacated, released and extinguished, and
all public right or rights therein
be transferred to the jurisdiction of the
County of Essex, in the State of New Jersey,
the same 6.00 feet to the Northern line
of the Bella Vista Avenue, hereinafter
described, and the same more or less to
the place of BEGINNING.

Section 29. That the portion of Bella
Vista Avenue, hereinafter described, be
vacated, released and extinguished, and
all public right or rights therein
be transferred to the jurisdiction of the
County of Essex, in the State of New Jersey,
the same 6.00 feet to the Northern line
of the Bella Vista Avenue, hereinafter
described, and the same more or less to
the place of BEGINNING.

Section 30. That the portion of Bella
Vista Avenue, hereinafter described, be
vacated, released and extinguished, and
all public right or rights therein
be transferred to the jurisdiction of the
County of Essex, in the State of New Jersey,
the same 6.00 feet to the Northern line
of the Bella Vista Avenue, hereinafter
described, and the same more or less to
the place of BEGINNING.

Section 31. That the portion of Bella
Vista Avenue, hereinafter described, be
vacated, released and extinguished, and
all public right or rights therein
be transferred to the jurisdiction of the
County of Essex, in the State of New Jersey,
the same 6.00 feet to the Northern line
of the Bella Vista Avenue, hereinafter
described, and the same more or less to
the place of BEGINNING.

Section 32. That the portion of Bella
Vista Avenue, hereinafter described, be
vacated, released and extinguished, and
all public right or rights therein
be transferred to the jurisdiction of the
County of Essex, in the State of New Jersey,
the same 6.00 feet to the Northern line
of the Bella Vista Avenue, hereinafter
described, and the same more or less to
the place of BEGINNING.

Section 33. That the portion of Bella
Vista Avenue, hereinafter described, be
vacated, released and extinguished, and
all public right or rights therein
be transferred to the jurisdiction of the
County of Essex, in the State of New Jersey,
the same 6.00 feet to the Northern line
of the Bella Vista Avenue, hereinafter
described, and the same more or less to
the place of BEGINNING.

Section 34. That the portion of Bella
Vista Avenue, hereinafter described, be
vacated, released and extinguished, and
all public right or rights therein
be transferred to the jurisdiction of the
County of Essex, in the State of New Jersey,
the same 6.00 feet to the Northern line
of the Bella Vista Avenue, hereinafter
described, and the same more or less to
the place of BEGINNING.

Section 35. That the portion of Bella
Vista Avenue, hereinafter described, be
vacated, released and extinguished, and
all public right or rights therein
be transferred to the jurisdiction of the
County of Essex, in the State of New Jersey,
the same 6.00 feet to the Northern line
of the Bella Vista Avenue, hereinafter
described, and the same more or less to
the place of BEGINNING.

Section 36. That the portion of Bella
Vista Avenue, hereinafter described, be
vacated, released and extinguished, and
all public right or rights therein
be transferred to the jurisdiction of the
County of Essex, in the State of New Jersey,
the same 6.00 feet to the Northern line
of the Bella Vista Avenue, hereinafter
described, and the same more or less to
the place of BEGINNING.

Section 37. That the portion of Bella
Vista Avenue, hereinafter described, be
vacated, released and extinguished, and
all public right or rights therein
be transferred to the jurisdiction of the
County of Essex, in the State of New Jersey,
the same 6.00 feet to the Northern line
of the Bella Vista Avenue, hereinafter
described, and the same more or less to
the place of BEGINNING.

Section 38. That the portion of Bella
Vista Avenue, hereinafter described, be
vacated, released and extinguished, and
all public right or rights therein
be transferred to the jurisdiction of the
County of Essex, in the State of New Jersey,
the same 6.00 feet to the Northern line
of the Bella Vista Avenue, hereinafter
described, and the same more or less to
the place of BEGINNING.

Section 39. That the portion of Bella
Vista Avenue, hereinafter described, be
vacated, released and extinguished, and
all public right or rights therein
be transferred to the jurisdiction of the
County of Essex, in the State of New Jersey,
the same 6.00 feet to the Northern line
of the Bella Vista Avenue, hereinafter
described, and the same more or less to
the place of BEGINNING.

Section 40. That the portion of Bella
Vista Avenue, hereinafter described, be
vacated, released and extinguished, and
all public right or rights therein
be transferred to the jurisdiction of the
County of Essex, in the State of New Jersey,
the same 6.00 feet to the Northern line
of the Bella Vista Avenue, hereinafter
described, and the same more or less to
the place of BEGINNING.

Section 41. That the portion of Bella
Vista Avenue, hereinafter described, be
vacated, released and extinguished, and
all public right or rights therein
be transferred to the jurisdiction of the
County of Essex, in the State of New Jersey,
the same 6.00 feet to the Northern line
of the Bella Vista Avenue, hereinafter
described, and the same more or less to
the place of BEGINNING.

Section 42. That the portion of Bella
Vista Avenue, hereinafter described, be
vacated, released and extinguished, and
all public right or rights therein
be transferred to the jurisdiction of the
County of Essex, in the State of New Jersey,
the same 6.00 feet to the Northern line
of the Bella Vista Avenue, hereinafter
described, and the same more or less to
the place of BEGINNING.

Section 43. That the portion of Bella
Vista Avenue, hereinafter described, be
vacated, released and extinguished, and
all public right or rights therein
be transferred to the jurisdiction of the
County of Essex, in the State of New Jersey,
the same 6.00 feet to the Northern line
of the Bella Vista Avenue, hereinafter
described, and the same more or less to
the place of BEGINNING.

Section 44. That the portion of Bella
Vista Avenue, hereinafter described, be
vacated, released and extinguished, and
all public right or rights therein
be transferred to the jurisdiction of the
County of Essex, in the State of New Jersey,
the same 6.00 feet to the Northern line
of the Bella Vista Avenue, hereinafter
described, and the same more or less to
the place of BEGINNING.

Section 45. That the portion of Bella
Vista Avenue, hereinafter described, be
vacated, released and extinguished, and
all public right or rights therein
be transferred to the jurisdiction of the
County of Essex, in the State of New Jersey,
the same 6.00 feet to the Northern line
of the Bella Vista Avenue, hereinafter
described, and the same more or less to
the place of BEGINNING.

Section 46. That the portion of Bella
Vista Avenue, hereinafter described, be
vacated, released and extinguished, and
all public right or rights therein
be transferred to the jurisdiction of the
County of Essex, in the State of New Jersey,
the same 6.00 feet to the Northern line
of the Bella Vista Avenue, hereinafter
described, and the same more or less to
the place of BEGINNING.

Section 47. That the portion of Bella
Vista Avenue, hereinafter described, be
vacated, released and extinguished, and
all public right or rights therein
be transferred to the jurisdiction of the
County of Essex, in the State of New Jersey,
the same 6.00 feet to the Northern line
of the Bella Vista Avenue, hereinafter
described, and the same more or less to
the place of BEGINNING.

Section 48. That the portion of Bella
Vista Avenue, hereinafter described, be
vacated, released and extinguished, and
all public right or rights therein
be transferred to the jurisdiction of the
County of Essex, in the State of New Jersey,
the same 6.00 feet to the Northern line
of the Bella Vista Avenue, hereinafter
described, and the same more or less to
the place of BEGINNING.

Section 49. That the portion of Bella
Vista Avenue, hereinafter described, be
vacated, released and extinguished, and
all public right or rights therein
be transferred to the jurisdiction of the
County of Essex, in the State of New Jersey,
the same 6.00 feet to the Northern line
of the Bella Vista Avenue, hereinafter
described, and the same more or less to
the place of BEGINNING.

Section 50. That the portion of Bella
Vista Avenue, hereinafter described, be
vacated, released and extinguished, and
all public right or rights therein
be transferred to the jurisdiction of the
County of Essex, in the State of New Jersey,
the same 6.00 feet to the Northern line
of the Bella Vista Avenue, hereinafter
described, and the same more or less to
the place of BEGINNING.

Section 51. That the portion of Bella
Vista Avenue, hereinafter described, be
vacated, released and extinguished, and
all public right or rights therein
be transferred to the jurisdiction of the
County of Essex, in the State of New Jersey,
the same 6.00 feet to the Northern line
of the Bella Vista Avenue, hereinafter
described, and the same more or less to
the place of BEGINNING.

Section 52. That the portion of Bella
Vista Avenue, hereinafter described, be
vacated, released and extinguished, and
all public right or rights therein
be transferred to the jurisdiction of the
County of Essex, in the State of New Jersey,
the same 6.00 feet to the Northern line
of the Bella Vista Avenue, hereinafter
described, and the same more or less to
the place of BEGINNING.

Section 53. That the portion of Bella
Vista Avenue, hereinafter described, be
vacated, released and extinguished, and
all public right or rights therein
be transferred to the jurisdiction of the
County of Essex, in the State of New Jersey,
the same 6.00 feet to the Northern line
of the Bella Vista Avenue, hereinafter
described, and the same more or less to
the place of BEGINNING.

Section 54. That the portion of Bella
Vista Avenue, hereinafter described, be
vacated, released and extinguished, and
all public right or rights therein
be transferred to the jurisdiction of the
County of Essex, in the State of New Jersey,
the same 6.00 feet to the Northern line
of the Bella Vista Avenue, hereinafter
described, and the same more or less to
the place of BEGINNING.

Section 55. That the portion of Bella
Vista Avenue, hereinafter described, be
vacated, released and extinguished, and
all public right or rights therein
be transferred to the jurisdiction of the
County of Essex, in the State of New Jersey,
the same 6.00 feet to the Northern line
of the Bella Vista Avenue, hereinafter
described, and the same more or less to
the place of BEGINNING.

Section 56. That the portion of Bella
Vista Avenue, hereinafter described, be
vacated, released and extinguished, and
all public right or rights therein
be transferred to the jurisdiction of the
County of Essex, in the State of New Jersey,
the same 6.00 feet to the Northern line
of the Bella Vista Avenue, hereinafter
described, and the same more or less to
the place of BEGINNING.

Section 57. That the portion of Bella
Vista Avenue, hereinafter described, be
vacated, released and extinguished, and
all public right or rights therein
be transferred to the jurisdiction of the
County of Essex, in the State of New Jersey,
the same 6.00 feet to the Northern line
of the Bella Vista Avenue, hereinafter
described, and the same more or less to
the place of BEGINNING.

Section 58. That the portion of Bella
Vista Avenue, hereinafter described, be
vacated, released and extinguished, and
all public right or rights therein
be transferred to the jurisdiction of the

A Living Page Of History: When Russia Was Thrown Out As An Aggressor

Dying Of Its Own Inaction,
The League Of Nations Ex-
pelled Soviet Russia
By Ralph Heinzen

The man asked a very in-
teresting question: "Which
came first, the chicken or the
egg — Russian aggression or
the encirclement of Russia by
the West?"

The record, happily, speaks
for itself and as I dip back in
my memory I find, on Decem-
ber 14, 1933, a fortnight be-
fore the first Christmas of World
War II, a page of living history
which provides the answer.

A Long Walk
It was on that December day
that Potemkin, the vice commis-
sioner for political affairs, filling
in for the recently deceased Maxim
Litvinov, took the long walk from
the League of Nations building
across the wide assembly
room of the League of Nations
in Arian Palace, Geneva,
Switzerland, then up the long
side aisle and out of the organ-
ized society of nations into the
cold, cold world.

Russia had just been expelled
from membership by the League
of Nations for her predomi-
nant attack on Poland, her west-
ern neighbor and another member
of the League. Gone, too, was
the League's dignity as Red Rus-
sia's seat as a permanent mem-
ber of the Security Council. By
that time, also, the League As-
sembly and the Security Council
had been whittled down by the
ineffective weakness by the suc-
cessive withdrawals of Japan,
Germany and Italy, over their
own aggressive designs.

Watching Them Walk
Later, I was to witness many
other Russian diplomats, in the
long walk. The United Na-
tions was still in its swaddling
clothes, holding its meetings in
Hunter College, far in the
Bronx, because it had not yet
found a home of its own at Lake
Success. Iran had charged Soviet
Russia with squabbling on the top
half of Iranian soil and refusing
to get out even though the war
had ended.

Gromyko was Russia's delegate.
He objected to seating the Iranian
delegate at the Security Council
table during the hearing. His ob-
jection was overruled. Gromyko
got up, gathered his papers, and
walked out. It was the first of
many such diplomatic sorties that
I was to watch, but those walk-
outs were voluntary, not involun-
tary.

Expelled For Aggression
For History, however, the
shame of Russia was spread on
the records of the League of Na-
tions: Soviet Russia was expelled
for an unprovoked aggression.
Germany, Japan and Italy, all
aggressors, had merely quit, be-
fore they were expelled. Russia
was the only major power to
suffer the full indignity of ex-
pulsion untempered by resignation.

I turn my back to December 14,
1933, because I will there that
day and watched the long walk
which Potemkin took up the aisle
of the Assembly. I was on a
"bleacher" from the French
front where I had been continu-
ously, since the start of the war,
and United States was correspond-
ent with the French Armies.

Russia's undeclared war on Fin-
land, which began on November
30, 1939, by a massive attack by
Red Army units on Finland's
Carelian border was the first act
of aggression by or against Sov-
iet Russia. If you bar the
"rape" of Poland by Hitler and
Stalin in that infamous non-ag-
gression treaty which Molotov
and Ribbentrop signed, in the

Kremlin, in Stalin's presence, on
August 23, 1939.
Hitler's Methodic Madness
I was in Paris, as UP chief
correspondent, that August, and
consequently, the Quai d'Orsay,
or French Foreign Office, and
the Russian and Polish ambas-
sies were parts of call on my
daily rounds. I know that as the
summer of 1939 progressed, each
day saw Hitler grow more men-
acing and tougher in his demands
on Poland. Late in July, the cam-
paign of hate had come near to
a climax.

Events moved too fast for the
aging Litvinov who, six years
previously, had been the arisan
of American recognition. One of
the early Bolsheviks, married to
an English wife, Litvinov had
been the patient negotiator who
went to Washington and after
weeks of haggling came up with
the recognition agreement which
President Franklin Roosevelt an-
nounced to the world on Novem-
ber 16, 1933.

By now, six years later, things
were moving too fast for Litvinov.
Molotov, who was then Sta-
lin's moving to fast for Litvinov.
Molotov, who was then Sta-
lin's moving to fast for Litvinov.
Molotov, who was then Sta-
lin's moving to fast for Litvinov.

Under Molotov, things moved
swiftly. He invited France and
Britain to send military missions
to discuss with the Kremlin some
form of guaranteeing the status
quo of the Baltic. There was a
night ovation: Molotov did not
tell Daladier and Chamberlain
that, at the same time, he was
inviting the Germans to talk
things over, too.

Molotov thought the French
and British would fly their top
generals and their chiefs of staff,
Gaimelin and Gort, to Moscow.
Instead, they picked missions of
second-rate generals and instead
of flying them in to Moscow, in

a hurry, they put them on a
slow boat up the Baltic. They
arrived in Moscow on August 11,
ten days late, and by that time
Hitler was so far committed to
an attack on Poland that only
the threat of an overwhelming
coalition of force could stop him.

The Soviet military mission
was an array of the finest and
highest. Marshal Voroshilov, its
chairman, informed the French
and British missions of the crisis
and discovered, to his horror, that
they had no power to negotiate
and could only go back to Paris
and London and file reports.

Voroshilov outlined Russia's
military plan, however. Poland
was to mass its whole strength
against Hitler in the center of
the front. Russia was to send
the Red Army into Poland on
the two flanks of the Polish
Army, through Vilna in the
North and through Lemberg in
the South. Thus while the Poles
held the Russians in the center,
the Russians would apply the
pincers from two sides.

Poles Turn Plan Down
The French and British gen-
erals telegraphed the plan, in
coded messages, to Paris and Lon-
don. Warsaw would not even
listen to the suggestion. Poland
was ardently Catholic, strongly
anti-Communist and feared that
if it opened its eastern frontiers
to admit the Red Armies, it never
could get rid of them again.

Late on August 20, 1939, the
French and British missions in-
formed Voroshilov of the Poles
refusal. Two days later, the world
was shocked to learn that in a
midnight ceremony deep within
the Kremlin Ribbentrop, who had
been flown in from Berlin a
few hours before, had signed
with Molotov a German-Soviet
treaty of friendship pledging not
to attack each other and agreeing

Russia Was A Declared Aggressor In Finland 12 Years Before Encirclement Began

"The trouble was not one of
formulas or clauses: it was much
more serious—it was Chamber-
lainism," Molotov explained as he
coined a new word in diplomatic
dictionary. He pointed out that
he had taken 104 days for the
military missions to go nowhere,
the Russians using up 20 days
to prepare and deliver their pin-
cers plan, the French and British
taking 84 days to bring back
Warsaw's refusal.

French Ambassador's Warning
I know very well the French
Ambassador in Berlin in those
August days. His name was Cou-
dore and he had been an ex-
cellent career technician in the
Quai d'Orsay. His dispatches,
since the war, have become a
source of record and we find
that as early as August 19 he
reported from Berlin to the
French Government that Ribben-
trop was going to fly soon to
Moscow to sign the treaty. On
August 18, he again warned
Paris: "It is imperative to bring
the Russian negotiations to a sat-
isfactory conclusion as soon as
possible."

The rest is history. Hitler
moved into Poland against only
the rest, too, alas, is history.

taken resistance. On September
18, 1939, Stalin's Red Army
in as far as the Ribben-
trop-Molotov line and took his
half of the Polish pie. Without
firing a shot, Stalin had con-
quered half a nation.

At big black headlines around
the world told the story of Rus-
sia's move against Poland, Stalin
took advantage of the shock to
plant Red Army outposts in the
three Baltic republics of Estonia,
Latvia and Lithuania and then
turned to Finland and demanded
a "mutual assistance pact," along
with the loan of several strategic
islands, nominally Finnish, near
Leningrad and garrison privileges
for the Red Army on the Hangoe
peninsula.

Finland countered with several
lessor suggestions but Stalin's de-
mands grew progressively greater.
The truth is that Finland's oldest
pact of non-aggression was with
the Soviet Union, in 1932. In
recent years, Finland had joined
no other such arrangements
except for a two-power agree-
ment, with Sweden, to for-
mally join the Aland Islands.
The fortifications were wholly
defensive; the kind that could not
be used aggressively except
against an aggressor.

It was while the conversations
were still going on with Finland,
that Stalin attacked, without the
usual decent formula of a declara-
tion of war, through the pine
forests of Carulia.

Finland met the Russian ag-
gression spiritedly and bravely,
appealing to the League of Na-
tions for help. Before the League
members could be rallied, it was
necessary to declare Moscow the
aggressor. This the League did
promptly, in expelling Soviet Rus-
sia from membership.

The rest, too, alas, is history.

The League did not follow up its
courageous act of expulsion with
military aid and after 106 days
of fighting, the Russian superi-
ority in men and material
crushed the little Finnish army.
On March 13, 1940, the Finns
signed their capitulation in Mos-
cow.

Stalin's Seal
Stalin, driving a hard bargain,
demanded the surrender of the
Carolian peninsula. Finland's
main source of timber. He took
\$75,546.74 and \$1,888,706.72 re-
spectively.

Principal assets at the end of
1941 when the NATO "wall of
containment" was built by an
American General named Elmer,
however. Memories would, indeed,
have to be faulty to forget such
a recent happening. Russia, by
that time, had spread over the
lands, not only of the Poles and
Finns, but also over Lithuania,
Latvia, Estonia, Czechoslovakia,
Rumania, Bulgaria, Albania and
Hungary. They were thrown out
of Iran and Greece. "That was
the prelude to 'encirclement.'"

The chicken of aggression came
before the egg of encirclement,
definitely.

U. S. Savings Bank Of Newark Reports New Increases

The United States Savings
Bank of Newark, in its statement
of condition as of December 31,
reported this week total resources
of \$59,842,470.72 and total de-
posits of \$43,244,980.30 as com-
pared to \$51,966,923.98 and
\$47,555,273.58 respectively of a
year ago. The increases are \$1,
\$75,546.74 and \$1,888,706.72 re-
spectively.

Principal assets at the end of
1941 when the NATO "wall of
containment" was built by an
American General named Elmer,
however. Memories would, indeed,
have to be faulty to forget such
a recent happening. Russia, by
that time, had spread over the
lands, not only of the Poles and
Finns, but also over Lithuania,
Latvia, Estonia, Czechoslovakia,
Rumania, Bulgaria, Albania and
Hungary. They were thrown out
of Iran and Greece. "That was
the prelude to 'encirclement.'"

The chicken of aggression came
before the egg of encirclement,
definitely.

rage loans, \$26,315,484.68 and
cash on hand and in banks, \$1,
\$15,558.65. The surplus and re-
serves were \$4,099,592.34.

The institution has two offices
in Newark, its main office at
772-774 Broad Street and at 121
Seventh Avenue. The bank is a
member of the Federal Deposit
Insurance Corporation and its
members are insured up to \$10,000
for each depositor.

EAST NUTLEY GARAGE
C. A. FANELLI, Prop.
Body and Fender Repairing
Expert Auto Repairing
Phone: NUTLEY 5-6618
55 Washington Avenue, Nutley, N. J.

Where's Elmer . . .

... modeling for help in
finishing one of our deli-
cious sandwiches. Portions
are generous here — and
prepared with exacting
care.

FRANKLIN CASINO
BAR-RESTAURANT
338 FRANKLIN AVE.
BETWEEN JORDAHOFF ST. & BELLEVILLE
PL-9-2111

COMPLETE TV SERVICE
We Honor Warranty, We Make Necessary Replacements
and Charge Only for Labor.
Call PL-9-3465 for 24 hr. TV Service
FERRARO TV SERVICE

"SINCE 1946"
"We Give the Finest Within 24 Hour Service"
316 Greylock Parkway - Tel. Plymouth 9-3465 - Belleville, N. J.
Installations, Contracts — New and Renewals;
Repairs and Conversions For All Models

ALBERT H.
BORMANN
PLUMBING HEATING
COMMERCIAL INDUSTRIAL
RESIDENTIAL
45 MERTZ AVE. Plymouth 9-3247

JOHN G. YOUNG
Plumbing - Heating - Oil & Gas Burners
Kitchens Remodeled, Custom Built Cabinets
Leader and Gutter Work
Furnaces Vacuum Cleaned
Use Our Budget Plan For Payment
14 NEW STREET PLYMOUTH 9-1476

OPEN FOR A LIMITED TIME FOR
LUMP SUM INVESTMENTS
(Income Shares)
We Are Currently Paying
2 1/2% Interest
NORTH BELLEVILLE SAVINGS & LOAN ASSOCIATION
500 WASHINGTON AVE. BELLEVILLE 9, N. J.
Savings Insured Up to \$10,000 - Federal Savings
& Loan Insurance Corp.

Plymouth 9-1497 EYES EXAMINED
Dr. M. Roachvarg
OPTOMETRIST
Hours: DAILY 10:12 — 2:6
Evenings: Mon and Fri. to 8
And by Appointment
132 Washington Avenue
Belleville

RELIABLE BUYS
RELIABLE CARS
RELIABLE NEW CAR DEALER
Serving Essex County for 31 yrs.
BELLEVILLE-NUTLEY
BUICK-COMPUK
Buick

34 FORD the "worth more" car declares a dividend
Here Now!



STYLE DIVIDEND

The new 130-h.p. Y-block V-8
OVERHEAD VALVES
HIGH-TURBULENCE COMBUSTION CHAMBERS
SHORT-STROKE, LOW-FRICTION DESIGN
DOUBLE-DECK INTAKE MANIFOLD
DEEP-CAST "Y" BLOCK

The new 115-h.p. I-block SIX
OVERHEAD VALVES
HIGH-TURBULENCE COMBUSTION CHAMBERS
SHORT-STROKE, LOW-FRICTION DESIGN
4-PORT INTAKE MANIFOLD
DEEP-CAST "I" BLOCK

3 distinctive lines — 14 brilliant body styles
You'll find that each new feature in the '34 Ford is an extra dividend in driving enjoyment. For example, you get a special dividend in styling with Ford's distinctive new appearance. You get sparkling new interiors, too, that are a dividend in themselves. And you get special dividends in ride and performance... with new Ball-Joint Front Suspension... with your choice of Ford's two great new engines! And an additional dividend. Ford makes available all the power-assists you might find only in costlier cars. Come in, Test Drive the '34 Ford.

RIDE DIVIDEND
New Ball-Joint Front Suspension
This revolutionary new suspension is exclusive to Ford in its field. It allows greater up-and-down wheel travel for a smoother ride. It helps keep wheels in true alignment for consistently easy handling. Movement of wheels is closed, whether in up and down motion or in steering motion as wheels turn right or left.

The greatest engine advances since the original FORD V-8
Both NEW 1934 Ford engines have overhead valves for most efficient high-compression operation on today's fuels. Both engines have a deep-cast block with skirt that extends well below the crankshaft for greater strength and rigidity... smoother, quieter performance and extra-long engine life. Their modern short-stroke, low-friction design cuts friction losses... gives you more usable horsepower, more miles per gallon of gasoline. And new high-turbulence combustion chambers assure a more thorough mixing of fuel and air for faster, more efficient firing of fuel. Plan to Test Drive a '34 Ford. You'll find these new Ford power plants stand out as the greatest engine advances since the original Ford V-8!

...by the time he hears the 'phone...
...turns off the shower... and grabs a towel...
...and picks up the receiver...
...it's taken at least a minute...
THAT'S WHY... ON ANY CALL YOU MAKE IT'S A GOOD IDEA TO WAIT TEN RINGS



'34 FORD More than ever... THE STANDARD FOR THE AMERICAN ROAD
Make today your day for a Test Drive
GEORGE H. MEAD, INC.
190 WASHINGTON AVE. BELLEVILLE, N. J.
NEW JERSEY BELL TELEPHONE COMPANY

Indian Priest To Address New Jersey's Kemptis

Rev. Herbert A. de Souza, S.J., of India, will address The Kemptis of New Jersey, on Tuesday, at the Robert Treat Hotel, in Newark, at 2:30 p.m. Father de Souza was a native of Pakistan, entered the Society of Jesus at the age of twenty and taught in Ahmadabad, India; he continued his theological studies in Barcelona, Spain, at the Colegio de Sarria, and the Pontifical University. He has lectured in Spain, France, Holland and England.

Father de Souza is especially remembered for his brilliant talks with the Catholic Evidence Guild in Park Park. His subject will be where India stands and how valid is the impression that India is more partial to Russia than to the West.

Tea will be served following the meeting. Miss Grace Murphy is the hostess chairman.

Haddasah Hears Of Work Done By Youth Organization

The recent meeting of the Belleville-Nutley Haddasah, held at Congregational A.A.A., in Belleville, had as its theme "Birthday Party for 62,000 Children."

The theme was taken from the fact that 62,000 children have been rescued in the last 30 years by the Youth Aliyah, founded by Henrietta Szold. Youth Aliyah is a movement to bring displaced children into Israel.

The new prize-winning Youth Aliyah movie, "To Save One Life," was featured on the program. The picture of the rehabilitation of two separated sisters, was taken on location in Israel.

OUR CLASSIFIED SECTION BRINGS QUICK RESULTS TO ADVERTISERS

Business. The government's "choice"—Your guarantee of delicious eating! Much surplus fat removed before weighing. Acme is famous for beef! Featured at all Acme Markets!

Government Graded "U. S. Choice" OVEN READY

Snow Queen Contest

Deadline Set For Tomorrow

The Essex County CYO has set tomorrow as the deadline for parish CYO groups to enter their candidates for the Snow Queen Contest which is held in conjunction with the annual Snow Ball Dance to be conducted January 23, at the Seton Hall University gymnasium. The Snow Queen candidates



VITA PARTY SNACKS

HERRING FILLETS in WINE SAUCE

refreshing summer eating!

VITA FOOD PRODUCTS, INC.
644 GREENWICH ST., NEW YORK 14



CHUCK ROAST

or STEAK

33¢

SAVE 50% C Household Institute 10 qt. Waterless Dutch Oven \$5.99

HOW MUCH ADD CRIBBIT TO WINTER MEALS? Family Circle MARAZING STILL ONLY 5¢

All Prices Effective Through Saturday, Jan. 9

What Is Dance Training

Dance Training, Given Properly, Teaches Grace, Poise, Self-Confidence, Rhythm, Good Posture, Ability To Mix With Others, As Well As The Technical Aspects Of Dancing. It Is Also Essential For The Physical And Psychological Well Being Of Todays Child. — We Are Proud To Offer Complete And Proper Dance Training In Tap, Ballet, Acrobatic And Ballroom. Classes Are Arranged In Strict Accordance With Pupils' Ability And Advancement. Interest Is Taken In Every Child And Each Pupil Is Important To The School.

MID TERM CLASSES ARE NOW BEING FORMED

BOB KIMBLE'S — SCHOOL OF DANCE

543 WASHINGTON AVE. BELLEVILLE, N. J.
PLYMOUTH 9-2778

Rib Roast lb. 65¢

1st 6 ribs, 7 inch cut. So tender, so juicy, so delicious! Enjoy top-quality Acme rib roast of beef this week-end for a change!

Boneless Chuck Roast	lb.	59¢
Boneless Brisket	lb.	59¢
Plate Beef	lb.	10¢
Fresh Ground Beef	lb.	35¢

Chuck Lamb 2 in one combination	lb.	35¢
Smoked Tongues	lb.	49¢
Meaty Scapple	lb.	29¢
LUNCHEON MEATS		
Midget Liverwurst	lb.	59¢
Midget Bologna	lb.	59¢
Midget Salami	lb.	59¢
Serve Liver & Bacon!		
Lamb Liver	lb.	25¢
Sliced Bacon	lb.	69¢

Fresh Frosted Fish	lb.	49¢
Fillet of Flounder	lb.	47¢
Fillet of Haddock	lb.	33¢
Fillet of Perch	lb.	43¢
Cod Steaks	lb.	69¢
Salmon Steaks	lb.	59¢
Halibut Steak	lb.	75¢
Shrimp	lb.	57¢
Scallops	lb.	57¢

Soup Mix	LIPTON'S NOODLE	3 2-oz. pkgs.	31¢
Hash	ARMOUR'S CORNED BEEF	2 16-oz. cans	49¢
Carolina Rice		16-oz. package	17¢
Tuna Fish	IDEAL FANCY WHITE MEAT	7-oz. can	34¢
Mayonnaise	HOM-DE-LITE	16-oz. jar	33¢
Delicia	SUGAR WAFERS	2 16-oz. packages	75¢
Tide	"OCEANS OF SUDS"	2 large packages	55¢

FRUITS and VEGETABLES

Fancy Fresh BROCCOLI Bunch 19¢

Tender, fresh green spears! Serve broccoli for a change!

Fancy McIntosh APPLES 2 lbs. 19¢

Ideal for eating and cooking. Firm, juicy! Enjoy them now!

Juicy Florida ORANGES 5 lb. 35¢

Bursting with rich juice! Featured at all Acme Markets!

Fancy Western Carrots 2 cellophane packages 25¢

California Pascal Celery stick 19¢

FROZEN FOOD VALUES

Pies 2 8-oz. pkgs. 59¢

Swanson Chicken, Turkey or Beef

Ideal Fordhook	10-oz. Birdseye	19¢
Lima Beans	IDEAL 10-oz. MIXED	21¢
Fancy Peas	Birdseye 10-oz. can	33¢
Juice	MINUTE MAID Concentrated 6-oz. cans	35¢
Pies	MORTON'S Apple Cherry 10-oz. pkgs.	27¢

DAIRY DEPT. VALUES

Cheese EXTRA SHARP lb. 79¢

Cheese Food	Glendale Club 8-oz. pkgs.	89¢
Kraft Velveta	8-oz. pkgs.	57¢
American	Glendale Swiss 8-oz. pkgs.	29¢
Borden Gruyere	8-oz. pkgs.	35¢
Swiss	Fancy Domestic 8-oz. pkgs.	65¢
Cottage	8-oz. cup	19¢
Blue Cheese		69¢
Muenster		53¢

COFFEE

Wincrest Coffee	MILD 10-oz. can	89¢
Asco Coffee	MEDIUM 10-oz. can	90¢
Ideal Instant	2-oz. jar	53¢

COOKIES, CRACKERS

Arrowroot	NABISCO BISCUITS 10-oz. package	20¢
Nabisco Graham's	10-oz. pkgs.	31¢
Sunshine Biscuits	10-oz. pkgs.	39¢
Cookies	SUNSHINE Butter-Flavored 16-oz. pkgs.	29¢

CANDY DEPARTMENT

Mounds	PETER PAULS 7-oz. pkgs.	29¢
Chicken Bones	MISTALINE 8-oz. pkgs.	29¢
All Sorts	DUNHILL LICORICE 8-oz. pkgs.	19¢
Kraft Caramels	10-oz. pkgs.	39¢
Spice Drops	CHARLES 10-oz. pkgs.	25¢
Spangles	KELLOGG Chocolate 10-oz. package	29¢

CANNED VEGETABLES

Tomatoes	2 16-oz. cans	23¢
Libby Peas	2 15-oz. cans	25¢
Lima Beans	Inside Dry 16-oz. can	13¢
Red Cabbage	16-oz. can	19¢
Asparagus	Ideal All-Green 10-oz. can	29¢
Kidney Beans	Cut Salsa 10-oz. can	23¢
Ideal Beets	IDEAL 2 10-oz. cans	28¢
Corn	Ideal Fancy Golden Cream 2 10-oz. cans	31¢
Corn	IDEAL Kernel Whole Kernel 2 16-oz. cans	33¢

CANNED FRUITS

Blueberries	16-oz. 29¢	
Pineapple	DOLE 16-oz. can	19¢
Peaches	Hearts Delight 16-oz. can	33¢

GERBER'S FOODS

Strained	5 4-oz. jars	49¢
Chopped	6 7-oz. jars	89¢
Gerber Cereal	8-oz. pkgs.	16¢
Teething Biscuits	4-oz. pkgs.	23¢

BAKERY VALUES

Marble Pound Cake 55¢

Regularly 59¢ Family size. Special this week!

Macaroon Cups 36¢

Cocoanut Pkg. of 6

Bread 15¢

16-oz. loaf

Finest quality. Dated for freshness!

All Acmes Open Friday Till 9

UNITED STATES SAVINGS BANK

OF NEWARK, NEW JERSEY
772-774 Broad Street and 187 Market Street
121 Seventh Avenue

STATEMENT, DECEMBER 31, 1953

RESOURCES	
U.S. Government Bonds	\$ 22,804,341.92
Municipal, Public Utility and Railroad Bonds	1,935,606.25
Mortgage Loans	
Federal Housing Adm'r. Insured	\$ 4,319,215.99
Veterans Adm'r. (G.I.) Guaranteed	10,892,946.26
Conventional	11,103,522.43
Cash on Hand and Due from Banks	1,815,558.55
Collateral Loans	19,976.00
Banking House Buildings	750,000.00
Interest Accrued Receivable	186,416.30
Other Assets	15,087.02
	\$ 53,842,470.72

LIABILITIES	
Due to Depositors	\$ 49,244,980.30
Interest Accrued to Depositors to December 31, 1953	157,900.00
Funds of Mortgagees in Escrow	105,002.79
Other Liabilities	234,095.29
Surplus and Reserves	4,099,592.34
	\$ 53,842,470.72

Deposits in this bank are insured by the Federal Deposit Insurance Corporation, Washington, D. C., to the extent of \$10,000 for each depositor

Interest Payable and Credited Quarterly—
February 1, May 1, August 1 and November 1,
on savings account balances of \$10 to \$25,000

OFFICERS:

Thomas A. Laughlin Executive Vice President	Benjamin Follinback, President	William T. Haycock Comptroller
Joseph T. Harrison Vice President	Harry Kilpatrick Treasurer	Harry W. Howarter, Jr. Secretary
Charles A. Koenig Assistant Secretary and Assistant Treasurer	William E. Snowden Assistant Secretary and Assistant Treasurer	Harold W. Lewis Assistant Secretary and Assistant Treasurer

Willard F. Felt, Manager Seventh Avenue Office

BOARD OF MANAGERS:

Russell V. Adams	Joseph T. Harrison	Roy H. Kirsch
Charles J. Barkhorn	Fred Harrigan, Jr.	Thomas A. Laughlin
Joseph V. Clark, Jr.	William F. Hoffmann, Jr.	Charles W. Payne
Sergeant Dunner	S. Gormley-Jones	Walter A. Rakey, M.D.
Benjamin Follinback	Albert R. Jobe	Mildred A. Visser
Carl F. Good	Harry Kilpatrick	Robert A. Zachary

Fred Herrigel, Jr., Counsel

Acme Markets

Ideal Dog Food	3 10-oz. cans	43¢
Lux Liquid Detergent	12-oz. can	39¢
Lux Liquid Detergent	22-oz. can	69¢
KRAFT Parkay Margarine	quarters 16-carton	31¢

Spreads smoothly even when cold. Try a carton now!

THE BELLEVILLE TIMES-NEWS

ADVERTISING, NEWS AND BUSINESS OFFICE

322 WASHINGTON AVENUE

Published every Friday by The Belleville Times-News Corporation, Belleville, N. J.

Telephone Plymouth 8-2500

RALPH E. HEINZEN, EDITOR AND PUBLISHER

Old-Time Canal Boats

It would have been a joy to see
Canal boats plying up and down
The streams through fragrant flowering
lane

Or past the outskirts of our town.
When boatmen let their horses rest
Awhile beneath a sheltering tree,
One sleepy robin from its nest
Chirping a twilight litaney.
Canals, quick-silver in the shade,
With water-lilies waxen-white,
Boats winding through a quiet glade.
It would have been a peaceful sight!

Marjorie Sonters Scheuer

Putting A White Elephant To Work

Soho Isolation Hospital, rising in all its majestic isolation—no pun intended—on its hill in Belleville, within minutes of the Nutley and Bloomfield borders, has been thrown open by decision of the Essex County Board of Freeholders to 75 non-contagious cases. That, in itself, is a step in the right direction and the Nutley Sun can only express its pleasure because we have been campaigning since two years to have the hospital opened to general cases and used to its full capacity.

The Isolation Hospital has 360 beds, hence only one-fifth of its capacity is being assigned to general hospitalization needs. Alas, the 75 cases are to be county relief cases, only. The doors of Soho will not open for paying patients from the general public. This despite the fact that the average, over the past two years, has been less than 75 contagious cases at a time. That still leaves more than 200 idle beds in a central institution while Belleville, Nutley and Bloomfield are without hospitals.

It is the contention of The Times-News that until such time as the Lutheran Memorial Hospital is built, a half-mile down Franklin Avenue, the Essex Freeholders should throw Soho Hospital wide open to all the accident cases of the three towns. A check of police records shows that the total number, for the three towns, would not exceed 50 at any time.

In this day of a serious shortage of accommodations, it is inhuman to allow 200 or more hospital beds, in the finest hospital in the East, to lie idle. Every hospital must be used to its capacity. If there is an advantage for the County to send its charity patients to Soho, then there is an advantage for the neighboring towns to send their accident cases there. Most accident victims are able to pay their way, either by themselves or through accident insurance.

There was a time, thirty years and more ago, when contagious diseases were a public problem. Now, with the single exception of polio, they are under control. The need for a 360-bed hospital reserved wholly for contagious diseases no longer exists. Thirty years ago, traffic accidents in this area were no serious problem. They are today.

The hospital facilities exist. At no further cost to the county, Soho Hospital can truly serve the community. The power of decision lies with the Board of Freeholders. The Times-News urges the Freeholders to open Soho to the three towns for emergency accident cases until other facilities are available.

R. E. H.

Meeting Of Women's Guild
Of Fawcett Church Jan. 14

The regular meeting of the Women's Guild of Fawcett Presbyterian Church will be held on Thursday, January 14, at 1 p.m. with Mrs. George Newman, the new president, presiding.

Refreshments will be served by Mrs. Newman's group, and after the business session, Mrs. Fred Holland will show travel slides.

Charles F. Booth

Charles F. Booth, of 115 Overlook Avenue, died Saturday in East Orange General Hospital after a long illness. He was 56. Mr. Booth, a patrolman on the Belleville police force, was appointed to the department in June, 1937. He was assigned principally to traffic duty. He was born in Rutherford and lived in Newark before moving to Belleville 32 years ago.

He leaves his wife, Mrs. Elizabeth Lasho Booth; three daughters, Mrs. Anna McShane, of Kearny, and Misses Mildred and Elizabeth Booth, both at home, and a son, Charles Booth, of Nutley.

A solemn high requiem mass was offered in St. Mary's Church, Nutley, burial was in Holy Cross Cemetery, North Arlington.

George C. Lee

George C. Lee, of 45 Verona Avenue, Newark, formerly of Belleville, died Sunday at his home after a long illness. He was 66.

Born in New York, Mr. Lee lived in Belleville before moving to Newark about 28 years ago. A steelworker, Mr. Lee retired four years ago from the Paterson Tank and Boiler Co., Paterson.

He was a member of the Essex Hose Co. No. 3 of the Exempt Fireman's Association of Belleville.

Mr. Lee is survived by his wife, Mrs. Mary Frank Lee; a daughter, Mrs. Emil Schuren of Newark; two sons, George C. Lee, Jr., of Cortlandt, and Lee Roy E. Lee, of Millboro, Del.; two sisters, Mrs. George Simpson, of Newark, and Mrs. Florence Caskey, of Nutley, and six grandchildren.

Services were held Tuesday at the William V. Irvine & Son Funeral Home, in Washington Avenue. Rev. Peter R. Deckenbach, of Christ Episcopal Church officiated. Burial was in Glendale Cemetery, Newark.

William E. Walker

William E. Walker, of 87 Adelaide Street, Belleville died last night at his home after a heart attack. He was 69.

Mr. Walker was a self-employed carpenter, born in Leicester, England; he came to the United States in 1907 and lived in Philadelphia. He moved to Belleville

The Alternative Of Greater School Aid

The New Jersey Poll division of the Princeton Research Service was hired at a cost of \$5,000 by the State School Aid Commission to sound out public opinion on the dual question of increasing the state aid to public schools and the widening of the tax base to pay for it. The results of the poll were turned over on January 31, 1952, to the Commission but only this week did the startling results leak out—startling to those advocates of "something for nothing."

The poll showed that although 61 per cent of the public believe the state is not giving enough aid to the local school districts, only 48 per cent would like to see the state aid increased if it meant more taxes. The advocates of widening the base of the tax structure proposed four ways of raising the funds: A graduated state income tax up to 6% on personal income; a 6% state tax on the net income of business; a 2% state sales tax on all consumer goods except food, or another hike in real estate taxes.

New Jersey has been fortunate to escape, thus far, both a state income and a state sales tax. It is one of a very few number of states in the Union which have not piled up those taxes on the existing fiscal pyramid. It is very generally realized, from unhappy past experience, that once a state income tax or a state sales tax is created, you never again can get it off the books. Nevertheless, there is a 48 per cent minority which expressed an opinion a willingness to take on the burden of those new taxes. Their opinion was divided as follows: 2% sales tax on all consumer goods except food 34%, 6% tax on the net income of business 34%. A graduated tax on personal income up to 6% 21%. Higher real estate taxes 8%. Other forms of new taxes 3%.

The results of the total survey showed that:

61% of the people believe the State is not giving enough money toward the support of local public schools, but only 48% would favor giving more money if it meant higher taxes.

52% of the people favor their school district spending more money on education, but only 42% are willing to pay higher local taxes to achieve this end.

33% said they approved of the frequently criticized State tax structure, 32% said they disapproved of it, and 35% had no opinion.

79% of the people said that there are no groups or individuals paying more than their fair share of State and local taxes, and 84% felt that there were no groups or individuals paying less than their fair share.

It seems fair to conclude therefore, that the survey indicates:

1. A majority of the people of New Jersey are ready to spend more money on their schools, but slightly less than a majority are willing to pay the higher taxes necessary to provide the money they want to spend.

2. By and large, the voting public of New Jersey is satisfied with the existing State-local tax structure.

3. When pinned down on taxes, a majority of the people show no inclination to pile additional taxes on business. If new taxes are inevitable, a majority favors either state sales or state personal income taxes that they themselves would pay.

4. The sales tax, long regarded as a form of political suicide is just as popular as a tax on business profits and is far more popular than a personal income tax.

One Man's Opinion

French Government Seeks Military Aid From Allies In Effort To Thwart Communist Invasion Of Thailand And Malaya

BY RALPH E. HEINZEN

The Red switch in Southeast Asia, from Korea to Vietnam, points up what the French have tried to tell us for many months past, that Communism's objective is not Indochina but the rich rice bowl of the west and south, in Thailand and in Malaya. More and more, the French contention of Vietnam is essential to prevent the Communist penetration of the Southeast Asian peninsula, the most vulnerable sector in the whole perimeter of American defense stretching down from Alaska through Japan, Korea, Okinawa, Formosa and the Philippines to Indochina, then on to Australia and New Zealand.

Thailand and Malaya, Asia means not only Indochina, but the border with Thailand. By dint of hard fighting, Indonesia was won back from "Red" guerrillas but, politically, the party is so strong that the present government can stay in power only so long as the Communists in the legislature vote for it. Only by isolating Communist guerrillas in Malaya has a military stalemate been achieved by conventional peace methods, having won their strength at the polls, Vietnam, therefore, is the key to Southeast Asia.

France knows the peril to its own defensive system, as well as to Britain's empire, in this week's heavy fighting in Vietnam. If Indochina falls, Thailand could not resist for long against the strong Communist minority in that land, and if Thailand falls, the door will be open to the Malayan peninsula.

The French Government, therefore, asks us and asks the British, the Australians and the New Zealanders to join their military allies and send divisions into the field—

or Paris may accept one of the almost continuous offers of Ho Chi Minh for negotiations for an armistice in Indochina. It is France's contention that Chinese divisions and arms, freed by the truce of Panmunjom from action in Korea, are now being poured into the fighting in Vietnam. Alone, France is not strong enough to fight Ho and the Chinese.

In the light of Panmunjom, Communist protests of peace may be taken with a grain of salt. He who makes peace feels a need for a press interview, later broadcast by Communist radio stations, to commit him to nothing. He can say so many have done that, he was misguided. To back up his peace talk, however, Ho did liberate a hundred French and North African prisoners of war on Christmas as proof of our ardent desire for peace.

Apart from Indochina the only place where America can be said to be in a serious Asian defense line to the extent of furnishing military supplies and providing strategic and technical advice is Thailand. That country, now in a state of uneasy peace, would be the first directly menaced if a sudden invasion of Chinese aid in the air or on land pushed the Vietnam through to victory next door, or if the French should decide to sue for an armistice.

A Washington allotment of \$505,000 in addition to the subsidizing of at least one-third of the Franco-Vietnamese war bill by the United States is intended to serve against such a reversal. So is the new French policy of limited attack. This was designed to prevent an anticipated wintertime Vietnam offensive, with the weight behind it of supplies coming in from the aid rate of 8,000 tons monthly for some time past.

The most valuable commodity that comes in from China, however, is never mentioned. It is an invisible export, perceived only in the magnitude of its end result, the knowledge of guerrilla-fighting as developed into a highly specialized politico-military art by China's own Communists.

They learned it the hard way. They mulled over their mistakes an experience taught them to make the countryside and not the towns their priority objective for domination. What they evolved in its aggressive effort, far more valuable in Southeast Asia's jungles, swamps, and paddy fields than any Russian tanks, artillery, or warplanes. It enabled them to run the Chinese Nationalists off the mainland without use of a single aircraft, although Generalissimo Chiang Kai-shek's men had American-trained air squadrons and armored formations.

Gen. Vo Nguyen Giap, the Vietnamese commander in Indochina, is thoroughly trained in guerrilla warfare and employs it most skillfully. He has studied it in China. So have many of his cadre instructors. Guerrilla leaders, on the Chinese Communist model, provide political instruction in constantly mul-

political gains may be thrown away unless the United States discards some strategic obsessions. They demand that it look the Chinese Communists a quarter of a century to gain their final objective in the civil war.

The Communist objectives in Southeast Asia have not changed. They are out to gain ascendancy over the area as a prelude to the takeover of the whole of Asia. They believe their ideology can encompass. They want to do it without starting World War III, since they are not ready for the consequences of that. There is a stalemate on the battlefields. So the move is now toward the conference hall, hence Ho's loud protestations of peace and his release of a handful of prisoners.

This stresses the need for clear thinking in and about Southeast Asia. For political fire across the conference table has to be aimed more precisely than that across the combat zone. And history, as at Panmunjom, shows there can be devastating ricochets.

Howard Savings Institution Has Surplus Fund Of \$24,036,076

The Howard Savings Institution of Newark, the largest mutual savings bank in New Jersey, with 266,743 depositors and four

branches, has announced that it has a surplus fund of \$24,036,076. The surplus is a self-appointed one, not elected, and the degree of national support it could command is a serious problem.

The degree of Communist infiltration into the overseas Chinese throughout all those lands of Southeast Asia is impossible to determine. Peking certainly is looking to cultivate those, and from all those countries in the peninsula students are going back to Communist China to take advantage of the free tuition offered, with a guaranteed job at the end of it.

Authoritative Communists in Southeast Asia have stressed that

WOULD YOU LIKE TO BE A NURSE?

One Year Course Meets Requirements For State License in Practical Nursing

Enroll Now — County Residents Tuition Free

Essex County Adult Technical School
300 North 13th Street, Newark

CLASS FORMING NOW — STARTS FEB. 1

For details CALL HUMBOLDT 3-7880 or

Fill in your name and address and a Practical Nurse

Bulletin will be sent to you

NAME _____

ADDRESS _____

CITY _____

STATE _____

ZIP _____

DATE _____

SIGNATURE _____

TELEPHONE _____

EDUCATION _____

EMPLOYMENT _____

REMARKS _____

DATE _____

INITIALS _____

NAME _____

ADDRESS _____

CITY _____

STATE _____

ZIP _____

DATE _____

SIGNATURE _____

TELEPHONE _____

EDUCATION _____

EMPLOYMENT _____

REMARKS _____

DATE _____

INITIALS _____

NAME _____

ADDRESS _____

CITY _____

STATE _____

ZIP _____

DATE _____

SIGNATURE _____

TELEPHONE _____

EDUCATION _____

EMPLOYMENT _____

REMARKS _____

DATE _____

INITIALS _____

NAME _____

ADDRESS _____

CITY _____

STATE _____

ZIP _____

DATE _____

SIGNATURE _____

TELEPHONE _____

EDUCATION _____

EMPLOYMENT _____

REMARKS _____

DATE _____

INITIALS _____

NAME _____

ADDRESS _____

CITY _____

STATE _____

ZIP _____

DATE _____

SIGNATURE _____

TELEPHONE _____

EDUCATION _____

EMPLOYMENT _____

REMARKS _____

DATE _____

INITIALS _____

NAME _____

ADDRESS _____

CITY _____

STATE _____

ZIP _____

DATE _____

SIGNATURE _____

TELEPHONE _____

EDUCATION _____

EMPLOYMENT _____

REMARKS _____

DATE _____

INITIALS _____

NAME _____

ADDRESS _____

CITY _____

STATE _____

ZIP _____

DATE _____

SIGNATURE _____

TELEPHONE _____

EDUCATION _____

EMPLOYMENT _____

REMARKS _____

DATE _____

INITIALS _____

NAME _____

ADDRESS _____

CITY _____

STATE _____

ZIP _____

DATE _____

SIGNATURE _____

TELEPHONE _____

EDUCATION _____

EMPLOYMENT _____

REMARKS _____

DATE _____

INITIALS _____

NAME _____

ADDRESS _____

CITY _____

STATE _____

ZIP _____

DATE _____

SIGNATURE _____

TELEPHONE _____

EDUCATION _____

EMPLOYMENT _____

REMARKS _____

DATE _____

INITIALS _____

NAME _____

ADDRESS _____

CITY _____

STATE _____

ZIP _____

DATE _____

SIGNATURE _____

TELEPHONE _____

EDUCATION _____

EMPLOYMENT _____

REMARKS _____

DATE _____

INITIALS _____

NAME _____

ADDRESS _____

CITY _____

STATE _____

ZIP _____

DATE _____

SIGNATURE _____

TELEPHONE _____

EDUCATION _____

EMPLOYMENT _____

REMARKS _____

DATE _____

INITIALS _____

NAME _____

ADDRESS _____

CITY _____

STATE _____

ZIP _____

DATE _____

SIGNATURE _____

TELEPHONE _____

EDUCATION _____

EMPLOYMENT _____

REMARKS _____

FOOD FAIR'S \$41,000 Motorola PRIZE CONTEST!

A total of **633** valuable
Motorola PRIZES
DISTRIBUTED THROUGHOUT
ALL FOOD FAIR STORES

Not a Drawing!
No Purchase Required!
HERE'S HOW YOU MAY WIN...



OPEN LATE
THURSDAY
to 9 P. M.
FRIDAY
to 10 P. M.
SATURDAY
8 A.M. to 6 P.M.

FREE!

Simply write in
25 additional words
or less "WHY I LIKE
TO SHOP AT FOOD FAIR"

Deposit on many Entries as you wish in
container provided at Food Fair.

Entries will be judged and prizes
awarded on basis of originality, sincerity,
and aptness of thought. Judge's decision
final. Duplicate prizes awarded in case
of tie.

All entries become the property of Food
Fair Stores and none can be returned.
Contest open to any resident of the
United States except employees of Food
Fair Stores, Inc., its advertising agencies
and their families. Contest subject to all
federal, state and local regulations.
Winners will be notified by mail. Win-
ners' names will be posted in all Food
Fair Stores.

Contest Closes Sat., Jan. 23, 1954

**GET FREE ENTRY BLANKS
AT FOOD FAIR NOW**

75
Big 21 inch
Motorola
T-V SETS
Worth \$249⁹⁵ Each

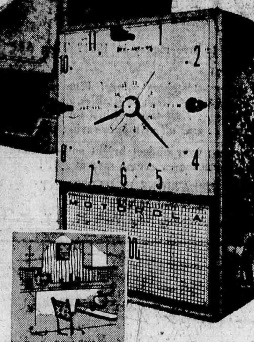
-AND 558 Motorola
Pin-Up CLOCK RADIOS
Worth \$39⁹⁵ each

New! . . . Modern! For Kitchen or Rumpus Room.
Timer turns on your favorite programs!

Motorola TV

MODEL 2112

Featuring all new
DOUBLE PICTURE
with new patented "PICTRON"
power unit and new concen-
trated power chassis to bring
your television's most POWER-
FUL PICTURE!
Installation and antenna
NOT INCLUDED



Always Your Best Buy — *PSG TOP QUALITY MEATS

GENUINE SPRING BABY

LEGS O' LAMB lb. **55c**

PSG* TOP QUALITY — U. S. GOV'T GRADED "CHOICE"

CHUCK ROAST lb. **35c**

FAVORITE BRAND

SLICED BACON . . . lb. pkg. **69c**

*PROTECTED, SELECTED, GUARANTEED OR YOUR MONEY BACK

PSG* TOP QUALITY
CROSS-RIB ROAST
BONELESS lb. **69c**

Boneless Chuck . . . lb. **59c** Ground Chuck . . . lb. **59c** Lamb Patties . . . lb. **29c**
Boneless Chuck Cubes lb. **59c** Loin Lamb Chops . . . lb. **99c** Soup Beef BONE IN lb. **29c**

Mott's Applesauce 2 glass **35c**

Heinz Ketchup 2 14 oz. bts. **45c**

Campbell's TOMATO JUICE 13 1/2 oz. can **10c**

Colosoft TOILET TISSUE 4 2 ply rolls **45c**

Green Beans FRE-MAR FRENCH STYLE 2 No. 303 cans **33c**

• Garden Fresh Fruits and Vegetables

SELECTED LUSCIOUS FINE EATING

BOSC PEARS 2 lbs. **23c**

SWEET THIN SKIN JUICY

FLORIDA ORANGES . 5 lb. bag **33c**

FRESH CRISP WESTERN

BROCCOLI 1 lb. reg. bunch **17c** **CELERY** large stalk **9c**

CRISP WHITE TABLE

• Frozen Foods

SNOW CROP

ORANGE JUICE
3 6 oz. cans **49c**

PICTSWEEP SPINACH LEAF or CHOPPED 12 oz. pkg. **15c**

PICTSWEEP SUCCOTASH 10 oz. pkg. **19c**

BOOTH'S SHRIMP BREADED 10 oz. pkg. **73c**

NORDEASTER

COD FILLETS
1 lb. pkg. **25c**

• Dairy Fair

KRAFT'S

VELVEETA
2 lb. pkg. **95c**

STATE FAIR — Premium Quality

MARGARINE
2 1 lb. pkgs. quaters **53c**

• Delicatessen

HYGRADE'S — ALL BEEF

FRANKS lb. **69c**

KITCHEN FRESH

COLE SLAW . . . 1 lb. ctn. **31c**

KITCHEN FRESH

FISH CAKES . . . 4 cakes in pkg. **29c**

• Fresh Seafood

TENDER BAY

Fresh Scallops
lb. **59c**

AJAX CLEANSER
2 14 oz. cans **23c**

CASHMERE BOUQUET TOILET SOAP

3 reg. cakes **23c** 2 bath cakes **23c**

New **FAB**
WASHES WHITER
WITHOUT BLEACHING
1 lb. box **29c** giant box **69c**

VEL MARVELOUS FOR WASHING
SO KIND TO HANDS
1 lb. box **29c** giant box **69c**

OCTAGON Laundry Soap 1 lb. bar **8c**

Palmolive Soap
with "Nature's Chlorophyll" in every cake
3 reg. cakes **23c** 2 bath cakes **23c**

† **SUNSHINE CHEEZ-IT JR. CRACKERS**
pkg. **19c**

OXFORD ROYAL MUSHROOMS
STEMS & PIECES 4 oz. can **29c**

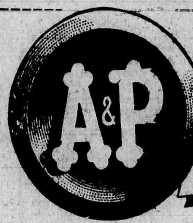
WHITE ROSE TEA . . . 1/4 lb. pkg. **33c**

554 Washington Avenue, Belleville



What does 1954
hold in store for
you? Will food
cost you less in '54?

Here's A&P's answer...



Customers' Corner

Problems Resolved!

Did you resolve to save money in 1954? Then A&P is for you!

You'll find budget-stretchers galore! Fine meats in a wide range of prices... fresh vegetables, dairy products, canned goods... all the makings for delicious, nutritious meals... and all at money-saving prices.

We help you keep your budget bright and balanced all year 'round. Come see... come save at A&P!

CUSTOMER RELATIONS DEPARTMENT

A&P Food Stores

420 Lexington Avenue, New York 17, N.Y.

Save More in '54—DAIRY BUYS!

	Year Ago	Now
Sliced Swiss Cheese	lb. 75c	65c
Parmesan Cheese	Domestic lb. 89c	79c
Swiss Cheese	Mel-O-Bit Process 2 lb. 1.27	97c
American Cheese	Mel-O-Bit Process 2 lb. 1.05	97c
Ched-O-Bit	Cheese food 2 lb. 95c	89c
Cream Cheese	Philadelphia or Borden's 3 oz. 2/35c	2/29c
Cheese Spread	Borden's American 1/2 lb. 67c	59c
Baby Gouda	8 oz. 49c	43c
Gruyere Cheese	Borden's 6 oz. pkg. 41c	35c
Sliced Swiss	Mel-O-Bit Process cheese 8 oz. 35c	29c
Romano Cheese	Domestic lb. 89c	83c
Pabst-ett Cheese Spread	4 1/2 oz. pkg. 29c	25c
Fresh Butter	Sunnyfield fancy creamy 1/4 lb. prints 75c	73c
Fresh Butter	Sunnyfield fancy creamy 1/4 lb. prints 77c	75c

Save More in '54—FROZEN FOODS!

	Year Ago	Now
Mixed Vegetables	Birdseye 10 oz. pkg. 23c	2/33c
Chopped Spinach	Libby's 14 oz. pkg. 22c	17c
Chopped Broccoli	Birdseye 10 oz. pkg. 25c	20c
Broccoli Spears	Libby's 10 oz. pkg. 29c	2/49c
Asparagus Spears	Birdseye 10 oz. pkg. 49c	45c
Peas & Carrots	Birdseye 10 oz. pkg. 19c	2/31c
Whole Strawberries	Libby's 12 oz. pkg. 41c	39c
Chopped Beef	Hygrade 8 oz. pkg. 37c	27c
Beef Steak Sandwich	Excellent 6 oz. pkg. 47c	43c
Swift's Sandwich Steaks	12 oz. pkg. 99c	87c
Cheeseburgers	Excellent 6 oz. pkg. 43c	39c
Birdseye Fryers	lb. 78c	68c
Swanson Fryers	lb. 77c	67c
Veal Cutlets	Excellent 8 oz. pkg. 73c	65c
Perch Fillet	Cap'n John lb. 39c	35c
Pacific Sole	Various brands lb. 65c	53c
Flounder Fillet	Cap'n John lb. 57c	49c
French Fried Flounder	Cap'n John 10 oz. pkg. 59c	49c

Save More in '54—CANNED MEATS!

	Year Ago	Now
Claridge Hamburgers	15 oz. can 57c	49c
Meat Balls	Claridge 11 1/2 oz. can 39c	32c
Meat Balls & Gravy	With spaghetti sauce 16 1/2 oz. can 39c	37c
Boned Chicken	Boyer-dex 5 oz. can 45c	41c
Chili Con Carne	Breadfast 3 oz. can 35c	25c
B&M Beef Stew	20 oz. can 55c	53c
Roast Beef Hash	Cudahy 16 oz. can 41c	35c
Corned Beef Hash	Broadcast or Stahl-Meyer 16 oz. can 29c	27c
Boned Chicken	Richardson & Robbins 12 oz. can 1.43	1.39

A&P's LOWER PRICES by the SCORE WILL SAVE YOU MORE in '54!

SAVE MORE IN '54—"SUPER-RIGHT" MEATS!

Round Pot Roast

Boneless (No Fat Added) 75c
Year Ago 99c lb.

One price... the advertised price... for all cuts of Round Pot Roast at A&P!

Smoked Beef Tongues

Year Ago 53c lb. 45c

Legs of Lamb

Regular Style Year Ago 62c lb. 57c
In All Meat Depts.

Oven-Ready Year Ago 68c lb. 63c
In Self-Service Meat Depts.

Ribs of Beef

Regular Style Year Ago 62c lb. 57c
In All Meat Depts.

10" cut Year Ago 69c lb. 67c
7" cut Year Ago 79c lb. 67c

Oven-Ready Ribs of Beef

Self-Service Meat Depts. 10" Cut lb. 67c 7" Cut lb. 77c

	Year Ago	Now
Top Sirloin Roast or Steak	lb. 99c	75c
Top Round Roast or Steak	lb. 99c	75c
Sirloin Steak	Juicy, flavorful lb. 89c	79c
Porterhouse Steak	Juicy, flavorful lb. 99c	85c
Chuck Roast or Steak	Bone in lb. 49c	39c
Boneless Chuck Pot Roast	lb. 65c	59c
Plate Beef	Bone in—fresh for boiling lb. 25c	19c
Ground Beef	Freshly ground lb. 49c	35c
Boneless Soup Beef	Shin lb. 59c	45c
Stewing Beef	Boneless lb. 65c	59c
Leg or Rump of Veal	Year Ago 77c lb. 63c	
Boneless Veal Roast	Shoulder lb. 87c	69c
Stewing Veal	Boneless lb. 77c	43c
Loin Lamb Chops	lb. 93c	89c
Lamb Chops	Rib or Shoulder lb. 75c	69c
Breast of Lamb	For stewing or braising lb. 23c	13c
Frankfurters	Skinless lb. 55c	53c
Beef Liver	Specially selected lb. 69c	29c
Beef Kidneys	For a piping hot stew lb. 24c	15c
Calves' Liver	Specially selected lb. 1.42	85c

SAVE MORE IN '54—PRODUCE!

Maine or Long Island U. S. No. 1 Grade "A" Size

	Year Ago	Now
Potatoes	10 lb. bag 25c 15 lb. bag 35c	
	Year Ago 10/57c	Year Ago 15/85c

McIntosh Apples

All-Purpose Year Ago 2 lb. 31c 2 lb. 25c
ctn.

	Year Ago	Now
Yellow Onions	U.S. No. 1 grade lb. 2/19c	3/8c
White Onions	For boiling lb. 15c	2/17c
Delicious Apples	Red, Western lb. 19c	2/35c
Yellow Bananas	Golden ripe lb. 15c	2/29c
Florida Grapefruit	Medium size 3/20c	4/25c
Idaho Potatoes	For baking 10 lb. bag 79c	57c
Fresh Tomatoes	Red, ripe 3 to 4 bunch 29c	19c
Fresh Broccoli	From Western farms 29c	29c
Brussel Sprouts	California 2 lb. box 29c	19c
Fresh Carrots	From Western farms 1 lb. cello bag 19c	13c
Iceberg Lettuce	Western large head 19c	17c
Pecan Nut Meats	Regalo brand 6 oz. cello bag 45c	39c

SAVE MORE IN '54—GROCERIES!

	Year Ago	Now
Pink Salmon	Coldstream Brand Year Ago 51c 16 oz. can 43c	
Tomato Juice	Iona Brand 2 18 oz. cans 19c 2 46 oz. cans 39c	
	Year Ago 2/25c	Year Ago 25c

	Year Ago	Now
Evaporated Milk	White House 11 1/2 oz. can 2/27c	4/49c
String Beans	Lord Mott—French style 15 1/2 oz. can 2/37c	2/31c
Applesauce	Mott's 15 oz. can 2/37c	2/35c
Dry Milk Solids	White House Non-fat dry milk 16 oz. can 35c	2/65c
Sauerkraut	ASP fancy quality 27 oz. can 2/37c	2/27c
Freestone Peaches	ASP fancy quality 30 oz. can 39c	35c
Apricots	Whole peeled 30 oz. can 39c	33c
Ging Peaches	Libby's or Del Monte 29 oz. can 33c	29c
Tomatoes	Del Monte—solid pack 19 oz. can 27c	2/49c
Tomatoes	Iona brand 28 oz. can 23c	2/37c
Small Sweet Peas	ASP fancy quality 16 oz. can 23c	2/39c
Waxed Paper	Cut-Rite 125 ft. roll 25c	2/45c
Krispy Crackers	Sunshine 16 oz. pkg. 25c	23c
Graham Crackers	Nabisco 16 oz. pkg. 29c	28c
Ground Black Pepper	Ann Page 4 oz. tin 69c	49c
River Brand White Rice	2 lb. pkg. 39c	29c
Sparkle Puddings	Ann Page 3/20c	3/17c
Royal Instant Puddings	All flavors 13c	3/29c
Crispo Cookies	Crest assortment 10 oz. pkg. 29c	27c
Norway Sardines	Blue Peter 3 1/2 oz. tin 2/33c	2/29c
Dried Apricots	ASP fancy 47c	43c
Tangerine Juice	Various brands 27c	22c

You don't have to consult a crystal ball to see how much you can save at A&P right now. All you have to do is compare A&P's current prices on scores and scores of items with last year's. As for the rest of 1954... the prospect looks equally bright. Naturally we can't predict wholesale food prices, but we can promise that whenever they go down A&P's prices will be reduced promptly to help you save more in '54. Come see... come save at A&P!

Save More in '54—POULTRY!

Ready-to-Cook Poultry (Weighed after cleaning)
Available in all meat departments

	Year Ago	Now
Chickens	Broiling and frying Under 3 lbs. lb. 59c	49c
Roasting Chickens	Sizes 3 lbs. and under 3 1/2 lbs. lb. 73c	63c

Regular Style Poultry (Weighed before cleaning)
Available in Service Meat Departments

	Year Ago	Now
Chickens	Broiling and frying 2 1/2 to 3 1/2 lbs. lb. 45c	37c
Roasting Chickens	4 1/4 to 5 lbs. lb. 55c	47c

Save More in '54—FISH!

Available in Fresh Fish Departments

	Year Ago	Now
Fancy Smelts	Regular style In Service Fish Depts. lb. 49c	39c
Fancy Smelts	In Self-Service Fish Depts. lb. 63c	49c
Fancy Halibut Steaks	lb. 59c	55c
Fancy Scallops	lb. 98c	75c
Fresh Codfish Steaks	lb. 45c	39c
Smoked Cod Fillet	lb. 53c	49c
Chowder Clams	doz. 45c	43c

Save More in '54—HOUSEHOLD AIDS!

	Year Ago	Now
S.O.S. Soap Pads	pkg. of 10 23c	2/43c
Diamond Matches	Birdseye Strike on box pkg. 10c	2/17c
Book Matches	Ohio pkg. of 50 15c	2/25c
Spic & Span	24c	23c
Cleanser	Bright Sail 8c	3/23c
Dazzle Bleach	32 oz. bottle 17c	16c
American Scouring Pads	pkg. of 12 2/19c	2/17c
S.O.S. Soap Pads	pkg. of 12 2/25c	2/23c
Statler Jumbo Towels	roll of 300 35c	33c
Swanee Towels	Assorted colors roll of 150 17c	2/33c
Garbage Bags	Tidy House—Jumbo roll of 20's 23c	21c
Sandwich Bags	Tidy House roll of 30's 2/19c	3/25c
Swanee Napkins	Colored roll of 50's 2/19c	3/25c

Save More in '54—BAKERY!

	Year Ago	Now
Lemon Pie	Jane Parker each 57c	49c
Caramel Pecan Buns	Jane Parker pkg. of 9 39c	33c
Pecan Fudge Square	Jane Parker 59c	49c
Jelly Roll	Jane Parker 43c	39c
Lady Fingers	Jane Parker 12 of 34c	33c
Pound Cake	Gold or Marble Jane Parker 10 oz. cut 30c	29c
Potato Chips	Jane Parker 4 oz. bag 25c	23c
Potato Chips	Jane Parker 16 oz. box 75c	69c

SAVE MORE IN '54!

AMERICA'S FOREMOST FOOD RETAILER... SINCE 1859
A&P Super Markets
THE GREAT ATLANTIC & PACIFIC TEA COMPANY
Prices effective through Saturday, January 9th
in Super Markets and Self-Service stores only.